



[Go to Product page](#)

Datasheet for ABIN5852947

POLR2H Protein (AA 1-150) (His tag)

1 Image

Overview

Quantity:	100 µg
Target:	POLR2H
Protein Characteristics:	AA 1-150
Origin:	Human
Source:	Escherichia coli (E. coli)
Protein Type:	Recombinant
Purification tag / Conjugate:	This POLR2H protein is labelled with His tag.
Application:	SDS-PAGE (SDS)

Product Details

Sequence:	MGSSHHHHHH SSSLVPRGSH MGSMAGILFE DIFDVKDIDP EGKKFDRVSR LHCESEFSKM DLILDVNIQI YPVDLGDKFR LVIASSTLYED GTLDDGEYNP TDDRPSRADQ FEYVMYGKVY RIEGDETSTE AATRLSAYVS YGGLLMRLQG DANNLHGFEV DSRVYLLMKK LAF
-----------	---

Purity: > 90 % by SDS - PAGE

Target Details

Target:	POLR2H
Alternative Name:	POLR2H (POLR2H Products)
Background:	POLR2H is one of the essential subunits of RNA polymerase II that is shared by the other two eukaryotic DNA-directed RNA polymerases, I and III. Recombinant human POLR2H protein, fused to His-tag at N-terminus, was expressed in E.coli and purified by using conventional

Target Details

chromatography techniques.

Molecular Weight: 19.5 kDa (173aa) confirmed by MALDI-TOF

NCBI Accession: [NP_006223](#)

UniProt: [P52434](#)

Pathways: [Regulatory RNA Pathways](#)

Application Details

Application Notes: Optimal working dilution should be determined by the investigator.

Restrictions: For Research Use only

Handling

Format: Liquid

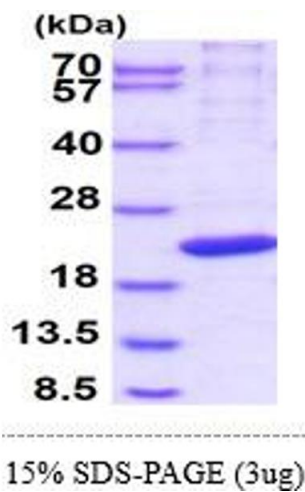
Concentration: 0.5 mg/mL

Buffer: Liquid. In 20 mM Tris-HCl buffer (pH 8.0) containing 0.15M NaCl, 10 % glycerol, 1 mM DTT

Storage: 4 °C,-20 °C,-80 °C

Storage Comment: Can be stored at +4C short term (1-2 weeks). For long term storage, aliquot and store at -20C or -70C. Avoid repeated freezing and thawing cycles.

Images



SDS-PAGE

Image 1.