

Datasheet for ABIN5852987

TOMM20 Protein (AA 25-145) (His tag)[Go to Product page](#)**1** Image

Overview

Quantity:	50 µg
Target:	TOMM20
Protein Characteristics:	AA 25-145
Origin:	Human
Source:	Escherichia coli (E. coli)
Protein Type:	Recombinant
Purification tag / Conjugate:	This TOMM20 protein is labelled with His tag.
Application:	SDS-PAGE (SDS)

Product Details

Sequence:	MGSSHHHHHH SSSLVPRGSH MGSDRKRRSD PNFKNRLRER RKKQKLAKER AGLSKLPDLK DAEAVQKFFL EEIQLGEELL AQGEYEKGV D HLTNAIAVCG QPQQLLQVLQ QTLPPPVFQM LLTKLPTISQ RIVSAQSLAE DDVE
Purity:	> 90 % by SDS - PAGE

Target Details

Target:	TOMM20
Alternative Name:	TOMM20 (TOMM20 Products)
Background:	Mmitochondrial import receptor subunit TOMM20 homolog, also known as TOMM20, belongs to the Tom20 family. The Tom machinery consists of import receptors for the initial binding of cytosolically synthesized preproteins and a general import pore (GIP) for the membrane

Target Details

translocation of various preproteins into the mitochondria. TOMM20 functions as the transit peptide receptor at the surface of the mitochondrion outer membrane and facilitates the movement of preproteins into the TOM40 translocation pore. Recombinant human TOMM20 protein, fused to His-tag at N-terminus, was expressed in E.coli and purified by using conventional chromatography techniques.

Molecular Weight: 16.2kDa (144aa), confirmed by MALDI-TOF

NCBI Accession: [NP_055580](#)

UniProt: [Q15388](#)

Pathways: [Unfolded Protein Response](#)

Application Details

Application Notes: Optimal working dilution should be determined by the investigator.

Restrictions: For Research Use only

Handling

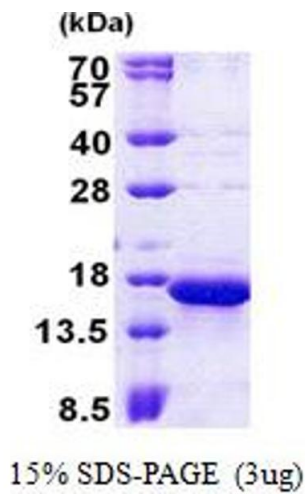
Format: Liquid

Concentration: 0.5 mg/mL

Buffer: Liquid. In 20 mM Tris-HCl buffer (pH 8.0) containing 0.1M NaCl, 20 % glycerol, 2 mM DTT

Storage: 4 °C,-20 °C,-80 °C

Storage Comment: Can be stored at +4C short term (1-2 weeks). For long term storage, aliquot and store at -20C or -70C. Avoid repeated freezing and thawing cycles.



SDS-PAGE

Image 1.