

Datasheet for ABIN5852999
RPS12 Protein (AA 1-132) (His tag)



[Go to Product page](#)

1 Image

Overview

Quantity:	100 µg
Target:	RPS12
Protein Characteristics:	AA 1-132
Origin:	Human
Source:	Escherichia coli (E. coli)
Protein Type:	Recombinant
Purification tag / Conjugate:	This RPS12 protein is labelled with His tag.
Application:	SDS-PAGE (SDS)

Product Details

Sequence:	MGSSHHHHHH SSSLVPRGSH MGSMEEGIA AGGVMDVNTA LQEVLKTALI HDGLARGIRE AAKALDKRQA HLCVLASNCD EPMYVKLVEA LCAEHQINLI KVDDNKKLGE WVGLCKIDRE GKPRKVVGCS CVVVKDYGKE SQAQDVIEEY FKCKK
Purity:	> 85 % by SDS - PAGE

Target Details

Target:	RPS12
Alternative Name:	RPS12 (RPS12 Products)
Background:	RPS12 is a ribosomal protein that is a component of the 40S subunit. The protein belongs to the S12E family of ribosomal proteins. It is located in the cytoplasm. Increased expression of this gene in colorectal cancers compared to matched normal colonic mucosa has been

Target Details

observed. As is typical for genes encoding ribosomal proteins, there are multiple processed pseudogenes of this gene dispersed through the genome. Recombinant human RPS12 protein, fused to His-tag at N-terminus, was expressed in E.coli and purified by using conventional chromatography techniques.

Molecular Weight: 16.9kDa (155aa), confirmed by MALDI-TOF

NCBI Accession: [NP_001007](#)

UniProt: [P25398](#)

Application Details

Application Notes: Optimal working dilution should be determined by the investigator.

Restrictions: For Research Use only

Handling

Format: Liquid

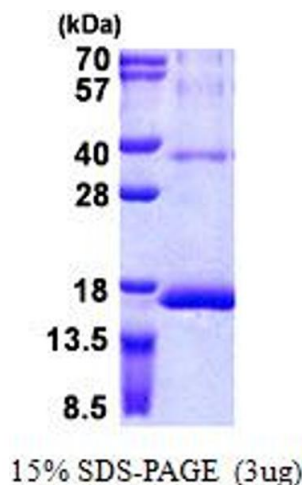
Concentration: 0.25 mg/mL

Buffer: Liquid. In 20 mM Tris-HCl buffer (pH 8.0) containing 0.15M NaCl, 30 % glycerol

Storage: 4 °C,-20 °C,-80 °C

Storage Comment: Can be stored at +4C short term (1-2 weeks). For long term storage, aliquot and store at -20C or -70C. Avoid repeated freezing and thawing cycles.

Images



SDS-PAGE

Image 1.