

Datasheet for ABIN5853047

**Stomatin Protein (STOM) (AA 55-288) (His tag)**[Go to Product page](#)**1** Image

## Overview

Quantity:	100 µg
Target:	Stomatin (STOM)
Protein Characteristics:	AA 55-288
Origin:	Human
Source:	Escherichia coli (E. coli)
Protein Type:	Recombinant
Purification tag / Conjugate:	This Stomatin protein is labelled with His tag.
Application:	SDS-PAGE (SDS)

## Product Details

Sequence:	MGSSHHHHHH SSSLVPRGSH MGSKIIKEYE RAIIFRLGRI LQGGAKGPGL FFILPCTDSF IKVDMRTISF DIPPQEILTK DSVTISVDGV VYYRVQNATL AVANITNADS ATRLLAQTTL RNVLGTKNLS QILSDREEIA HNMQSTLDDA TDAWGKVER VEIKDVKLPV QLQRAMAAEA EASREARAKV IAAEGEMNAS RALKEASMVI TESPALQLR YLQTLTTIAA EKNSTIVFPL PIDMLQGIG AKHSHLG
Purity:	> 90 % by SDS - PAGE

## Target Details

Target:	Stomatin (STOM)
Alternative Name:	STOM ( <a href="#">STOM Products</a> )
Background:	Erythrocyte band 7 integral membrane protein isoform a, also known as STOM, is a member of

## Target Details

---

a highly conserved family of integral membrane proteins. STOM may regulate ACCN1 and ACCN3 gating. It is a membrane protein involved in regulation of monovalent cation transport through lipid membranes. A second function of STOM may be to act as a cytoskeletal anchor. It is a major lipid-raft component of erythrocytes and epithelial cells, and is also an abundant platelet protein. Recombinant human STOM protein, fused to His-tag at N-terminus, was expressed in E.coli.

---

Molecular Weight: 28kDa (257aa)

---

NCBI Accession: [NP\\_004090](#)

---

UniProt: [P27105](#)

---

Pathways: [SARS-CoV-2 Protein Interactome](#)

## Application Details

---

---

Application Notes: Optimal working dilution should be determined by the investigator.

---

Comment: Denatured

---

Restrictions: For Research Use only

## Handling

---

---

Format: Liquid

---

Concentration: 1 mg/mL

---

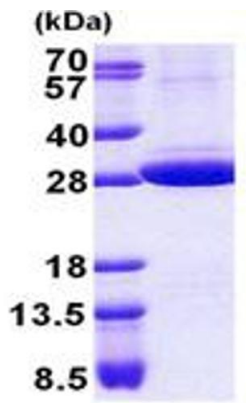
Buffer: Liquid. In 20 mM Tris-HCl buffer ( pH 8.0) containing 0.4M urea, 10 % glycerol

---

Storage: 4 °C,-20 °C,-80 °C

---

Storage Comment: Can be stored at +4C short term (1-2 weeks). For long term storage, aliquot and store at -20C or -70C. Avoid repeated freezing and thawing cycles.



15% SDS-PAGE (3ug)

### SDS-PAGE

Image 1.