

Datasheet for ABIN5853099
MRPS25 Protein (AA 1-173) (His tag)



[Go to Product page](#)

1 Image

Overview

Quantity:	100 µg
Target:	MRPS25
Protein Characteristics:	AA 1-173
Origin:	Human
Source:	Escherichia coli (E. coli)
Protein Type:	Recombinant
Purification tag / Conjugate:	This MRPS25 protein is labelled with His tag.
Application:	SDS-PAGE (SDS)

Product Details

Sequence: MGSSHHHHHH SSSLVPRGSH MGSMPMKGRF PIRRTLQYLS QGNVVKDSV KVMTVNYNTH
GELGEGARKF VFFNIPQIQY KNPWVQIMMF KNMTPSPFLR FYLDSGEQVL VDVETKSNKE
IMEHIRKILG KNEETLREEE EEKKQLSHPA NFGPRKYCLR ECICEVEGQV PCPSLVPLPK
EMRGKYKAAL KADAQD

Purity: > 90 % by SDS - PAGE

Target Details

Target:	MRPS25
Alternative Name:	MRPS25 (MRPS25 Products)
Background:	MRPS25 is a 28S subunit protein that belongs to the ribosomal protein S5P family. A pseudogene corresponding to this gene is found on chromosome 4. Recombinant human

Target Details

MRPS25 protein, fused to His-tag at N-terminus, was expressed in E.coli .

Molecular Weight: 22.5kDa (196aa)

NCBI Accession: [NP_071942](#)

UniProt: [P82663](#)

Pathways: [SARS-CoV-2 Protein Interactome](#)

Application Details

Application Notes: Optimal working dilution should be determined by the investigator.

Comment: Denatured

Restrictions: For Research Use only

Handling

Format: Liquid

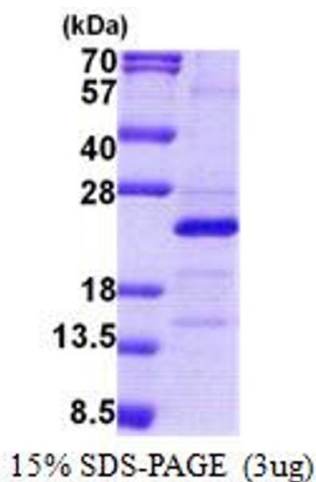
Concentration: 1 mg/mL

Buffer: Liquid. In 20 mM Tris-HCl buffer (pH 8.0) containing, 10 % glycerol, 0.4M urea

Storage: 4 °C,-20 °C,-80 °C

Storage Comment: Can be stored at +4C short term (1-2 weeks). For long term storage, aliquot and store at -20C or -70C. Avoid repeated freezing and thawing cycles.

Images



SDS-PAGE

Image 1.