

Datasheet for ABIN5853112  
**TTC35 Protein (AA 1-297) (His tag)**



[Go to Product page](#)

1 Image

## Overview

Quantity:	100 µg
Target:	TTC35
Protein Characteristics:	AA 1-297
Origin:	Human
Source:	Escherichia coli (E. coli)
Protein Type:	Recombinant
Purification tag / Conjugate:	This TTC35 protein is labelled with His tag.
Application:	SDS-PAGE (SDS)

## Product Details

Sequence: MGSSHHHHHH SSSLVPRGSH MGSMKVSSEL YDVTWEEMRD KMRKWREENS RNSEQIVEVG  
EELINEYASK LGDDIWIYE QVMIAALDYG RDDLALFCLQ ELRRQFPGSH RVKRLTGMRF  
EAMERYDDAI QLYDRILQED PTNTAARKRK IAIRKAQGKN VEAIRELNEY LEQFVG DQEA  
WHELAE LYIN EHDYAKAAFC LEELMMTNPH NHLYCQQYAE VKYTQG GLEN LELSRKYFAQ  
ALKLNNRNMR ALFGLYMSAS HIASNPKASA KTKKDNMKYA SWAASQINRA YQFAGRSKKE  
TKYSLKAVED MLETLQITQS

Purity: > 90 % by SDS - PAGE

## Target Details

Target:	TTC35
Alternative Name:	EMC2 ( <a href="#">TTC35 Products</a> )

## Target Details

**Background:** EMC2 is a component of the ER membrane protein complex. The protein belongs to the EMC2 family and contains 3 TPR repeats. Recombinant human EMC2 protein, fused to His-tag at N-terminus, was expressed in E.coli and purified by using conventional chromatography techniques.

**Molecular Weight:** 37.2 kDa (320aa) confirmed by MALDI-TOF

**NCBI Accession:** [NP\\_055488](#)

**UniProt:** [Q15006](#)

## Application Details

**Application Notes:** Optimal working dilution should be determined by the investigator.

**Restrictions:** For Research Use only

## Handling

**Format:** Liquid

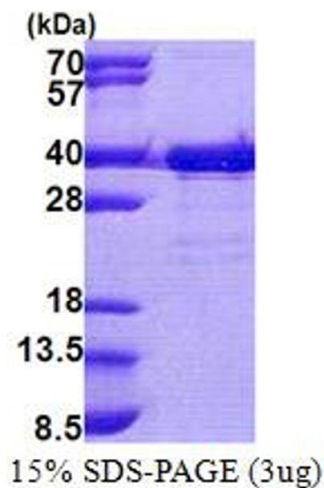
**Concentration:** 0.5 mg/mL

**Buffer:** Liquid. In 20 mM Tris-HCl buffer ( pH 8.0) containing 0.15M NaCl, 40 % glycerol, 2 mM DTT

**Storage:** 4 °C, -20 °C, -80 °C

**Storage Comment:** Can be stored at +4C short term (1-2 weeks). For long term storage, aliquot and store at -20C or -70C. Avoid repeated freezing and thawing cycles.

## Images



### SDS-PAGE

Image 1.