

Datasheet for ABIN5853118

**CD300a Protein (CD300A) (AA 18-128) (His tag)**[Go to Product page](#)**1** Image

## Overview

Quantity:	50 µg
Target:	CD300a (CD300A)
Protein Characteristics:	AA 18-128
Origin:	Human
Source:	Escherichia coli (E. coli)
Protein Type:	Recombinant
Purification tag / Conjugate:	This CD300a protein is labelled with His tag.
Application:	SDS-PAGE (SDS)

## Product Details

Sequence:	LSKCRTV AGPVGGSLSV QCPYEKEHRT LNKYWCRPPQ IFLCDKIVET KGSAGKRNGR VSIRDSPANL SFTVTLENLT EEDAGTYWCG VDPWLRDFH DPVVEVEVSV FPAS
Purity:	> 90% by SDS-PAGE

## Target Details

Target:	CD300a (CD300A)
Alternative Name:	CD300A ( <a href="#">CD300A Products</a> )
Background:	CD300A belongs to the CD300 family and contains 1 Ig-like V-type (immunoglobulin-like) domain. The protein is expressed not only by natural killer (NK) cells but also by T-cell subsets, B-cells, dendritic cells, mast cells, granulocytes and monocytes. CD300A is inhibitory receptor which may contribute to the down-regulation of cytolytic activity in natural killer (NK) cells, and

Target Details

	to the down-regulation of mast cell degranulation. Recombinant human CD300A protein, fused to His-tag at N-terminus, was expressed in E. coli and purified by using conventional chromatography techniques.
Molecular Weight:	14.7 kDa (134aa) confirmed by MALDI-TOF
NCBI Accession:	<a href="#">NP_009192</a>
UniProt:	<a href="#">Q9UGN4</a>
Pathways:	<a href="#">Regulation of Leukocyte Mediated Immunity</a> , <a href="#">Positive Regulation of Immune Effector Process</a>

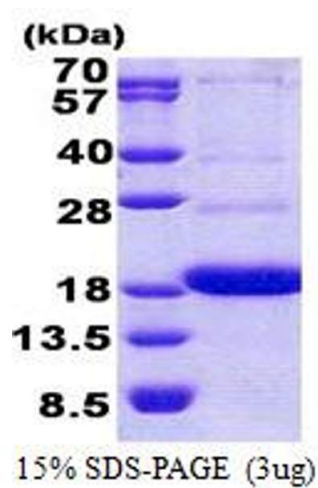
Application Details

Application Notes:	Optimal working dilution should be determined by the investigator.
Restrictions:	For Research Use only

Handling

Format:	Liquid
Concentration:	0.5 mg/mL
Buffer:	Liquid. In 20 mM Tris-HCl buffer ( pH 8.0) containing 0.15M NaCl, 10 % glycerol, 1 mM DTT
Storage:	4 °C,-20 °C,-80 °C
Storage Comment:	Can be stored at +2°C to +8°C for 1 week. For long term storage, aliquot and store at -20°C to -80°C. Avoid repeated freezing and thawing cycles.

Images



SDS-PAGE

Image 1.