

Datasheet for ABIN5853142
PSG5 Protein (AA 35-335) (His tag)



[Go to Product page](#)

1 Image

Overview

Quantity:	100 µg
Target:	PSG5
Protein Characteristics:	AA 35-335
Origin:	Human
Source:	Escherichia coli (E. coli)
Protein Type:	Recombinant
Purification tag / Conjugate:	This PSG5 protein is labelled with His tag.
Application:	SDS-PAGE (SDS)

Product Details

Sequence: MGSSHHHHHH SSSLVPRGSH MGSQVTIEAL PPKVSEKDV LLLVHNLPQN LAGYIWYKQQ
LMDLYHYITS YVVDGQINIY GPAYTGRET V YSNASLLIQN VTREDAGSYT LHIKRGDRT
RGVTGYFTFN LYCLKPKPYI TINNSKPEN KDVLAF TCEP KSENYTYIWW LNGQSLPVSP
RVKRPIENRI LILPSVTRNE TGPYECEIRD RDGGMRSDPV TLNVLYGPD LPSIYPSFTYY
RSGENLYLSC FAESNPPAEY FWTINGKFQQ SGQKLSIPQI TTKHRGLYTC SVRNSATGKE
SSKSMTVEVS APSGIGRLPL LNPI

Purity: > 80 % by SDS - PAGE

Target Details

Target:	PSG5
Alternative Name:	PSG5 (PSG5 Products)

Target Details

Background: PSG5 is a member of the PSG family, a group of closely related secreted glycoproteins that are highly expressed in fetal placental syncytiotrophoblast cells. PSGs become detectable in serum during the first two to three weeks of pregnancy and increase as the pregnancy progresses, eventually representing the most abundant fetal protein in the maternal blood at term. PSG5 function to stimulate secretion of TH2-type cytokines from monocytes, and they may also modulate the maternal immune system during pregnancy, thereby protecting the semi-allotypic fetus from rejection. Recombinant human PSG5 protein, fused to His-tag at N-terminus, was expressed in E.coli.

Molecular Weight: 36.4 kDa (324aa)

NCBI Accession: [NP_001123486](#)

UniProt: [Q15238](#)

Application Details

Application Notes: Optimal working dilution should be determined by the investigator.

Comment: Denatured

Restrictions: For Research Use only

Handling

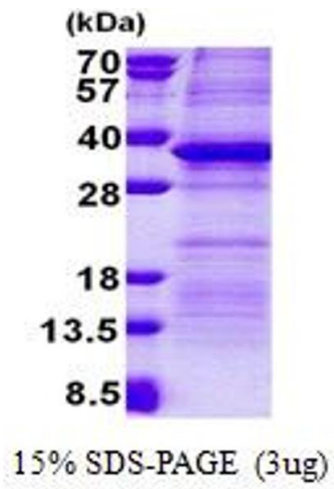
Format: Liquid

Concentration: 0.5 mg/mL

Buffer: Liquid. In 20 mM Tris-HCl buffer (pH 8.0) containing 1M urea, 10 % glycerol

Storage: 4 °C,-20 °C,-80 °C

Storage Comment: Can be stored at +4C short term (1-2 weeks). For long term storage, aliquot and store at -20C or -70C. Avoid repeated freezing and thawing cycles.



SDS-PAGE

Image 1.