



[Go to Product page](#)

Datasheet for ABIN5853151

ATP1B2 Protein (AA 68-290) (His tag)

1 Image

Overview

Quantity:	100 µg
Target:	ATP1B2
Protein Characteristics:	AA 68-290
Origin:	Human
Source:	Escherichia coli (E. coli)
Protein Type:	Recombinant
Purification tag / Conjugate:	This ATP1B2 protein is labelled with His tag.
Application:	SDS-PAGE (SDS)

Product Details

Sequence:	MGSSHHHHHH SSSLVPRGSH MGS DHTPKYQ DRLATPGLMI RPKTENLDVI VNVSDTESWD QHVQKLNKFL EPYNDSIQAQ KNDVCRPGRY YEQPDNGVLN YPKRACQFNR TQLGNCSGIG DSTHYGYSTG QPCVFIMNR VINFYAGANQ SMNVT CAGKR DEDAENLGNF VMFPANGNID LMYFPYYGKK FHVNYTQPLV AVKFLNVTPN VEVNVECRIN ANIATDDER DKFAGRVAFK LRINKT
Purity:	> 90 % by SDS - PAGE

Target Details

Target:	ATP1B2
Alternative Name:	ATP1B2 (ATP1B2 Products)
Background:	ATP1B2 is the non-catalytic component of the active enzyme, which catalyzes the hydrolysis of

Target Details

ATP coupled with the exchange of Na⁺ and K⁺ ions across the plasma membrane. The exact function of the beta-2 subunit is not known. The protein is composed of three subunits: alpha (catalytic), beta and gamma. Recombinant human ATP1B2 protein, fused to His-tag at N-terminus, was expressed in E.coli.

Molecular Weight: 27.8 kDa (246aa)

NCBI Accession: [NP_001669](#)

UniProt: [P14415](#)

Pathways: [Thyroid Hormone Synthesis](#)

Application Details

Application Notes: Optimal working dilution should be determined by the investigator.

Comment: Denatured

Restrictions: For Research Use only

Handling

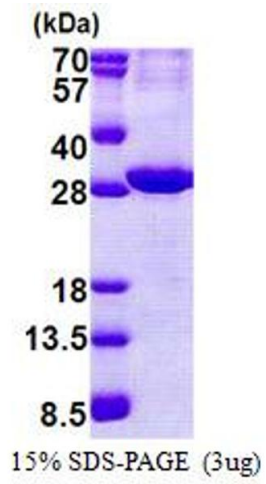
Format: Liquid

Concentration: 1.0 mg/mL

Buffer: Liquid. In 20 mM Tris-HCl buffer (pH 8.0) containing , 10 % glycerol, 0.4M urea

Storage: 4 °C,-20 °C,-80 °C

Storage Comment: Can be stored at +4C short term (1-2 weeks). For long term storage, aliquot and store at -20C or -70C. Avoid repeated freezing and thawing cycles.



SDS-PAGE

Image 1.