

Datasheet for ABIN5853153

Cathepsin F Protein (CTSF) (AA 271-484) (His tag)[Go to Product page](#)**1** Image

Overview

Quantity:	100 µg
Target:	Cathepsin F (CTSF)
Protein Characteristics:	AA 271-484
Origin:	Human
Source:	Escherichia coli (E. coli)
Protein Type:	Recombinant
Purification tag / Conjugate:	This Cathepsin F protein is labelled with His tag.
Application:	SDS-PAGE (SDS)

Product Details

Sequence:	MGSSHHHHHH SSSLVPRGSH MGSAPPEWDW RSKGAVTKVK DQGMCGSCWA FSVTGNVEGQ WFLNQGTLLS LSEQELLCD KMDKACMGGL PSNAYSAIKN LGGLETEDDY SYQGHMQSCN FSAEKAKVYI NDSVELSQNE QKLAAWLAKR GPISVAINAF GMQFYRHGIS RPLRPLCSPW LIDHAVLLVG YGNRSDVPFW AIKNSWGTDW GEKGYYYLHR GSGACGVNTM ASSAVVD
Purity:	> 90 % by SDS - PAGE

Target Details

Target:	Cathepsin F (CTSF)
Alternative Name:	CTSF (CTSF Products)
Background:	Cathepsin F, also known as CTSF, belongs to the cathepsin family. Cathepsins are papain family cysteine proteinases that represent a major component of the lysosomal proteolytic

Target Details

system. The CTSF gene is ubiquitously expressed, and it maps to chromosome 11q13, close to the gene encoding cathepsin W. CTSF is thought to play a role in normal protein catabolism, and because it is highly expressed in some cancer cell lines, it may be involved in degradative processes occurring during tumor progression. Recombinant human CTSF protein, fused to His-tag at N-terminus, was expressed in E.coli.

Molecular Weight: 26 kDa (237aa)

NCBI Accession: [NP_003784](#)

UniProt: [Q9UBX1](#)

Application Details

Application Notes: Optimal working dilution should be determined by the investigator.

Comment: Denatured

Restrictions: For Research Use only

Handling

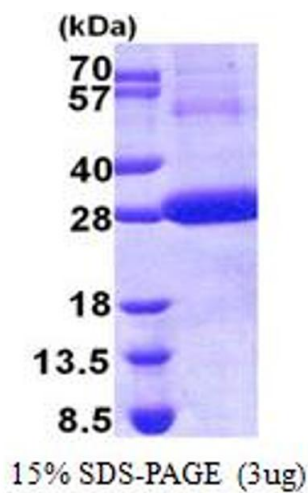
Format: Liquid

Concentration: 1 mg/mL

Buffer: Liquid. In 20 mM Tris-HCl buffer (pH 8.0) containing 0.4M urea, 10 % glycerol

Storage: 4 °C,-20 °C,-80 °C

Storage Comment: Can be stored at +4C short term (1-2 weeks). For long term storage, aliquot and store at -20C or -70C. Avoid repeated freezing and thawing cycles.



SDS-PAGE
Image 1.