

Datasheet for ABIN5853161
POLR2D Protein (AA 1-142) (His tag)



[Go to Product page](#)

1 Image

Overview

Quantity:	100 µg
Target:	POLR2D
Protein Characteristics:	AA 1-142
Origin:	Human
Source:	Escherichia coli (E. coli)
Protein Type:	Recombinant
Purification tag / Conjugate:	This POLR2D protein is labelled with His tag.
Application:	SDS-PAGE (SDS)

Product Details

Sequence:	MGSSHHHHHH SSSLVPRGSH MGSMAGGSD PRAGDVEEDA SQLIFPKEFE TAETLLNSEV HMLLEHRKQQ NESAEDEQEL SEVFMKTLNY TARFSRFKNR ETIASVRSLL LQKKLHKFEL ACLANLCPET AEESKALIPS LEGRFEDEEL QQILDDIQTQK RSFQY
Purity:	> 90 % by SDS - PAGE

Target Details

Target:	POLR2D
Alternative Name:	POLR2D (POLR2D Products)
Background:	POLR2D is the fourth largest subunit of RNA polymerase II, the polymerase responsible for synthesizing messenger RNA in eukaryotes. In yeast, this polymerase subunit is associated with the polymerase under suboptimal growth conditions and may have a stress protective

Target Details

role. A sequence for a ribosomal pseudogene is contained within the 3' untranslated region of the transcript from this gene. Recombinant human POLR2D protein, fused to His-tag at N-terminus, was expressed in E.coli.

Molecular Weight: 18.7 kDa (165aa)

NCBI Accession: [NP_004796](#)

UniProt: [O15514](#)

Pathways: [Regulatory RNA Pathways](#)

Application Details

Application Notes: Optimal working dilution should be determined by the investigator.

Comment: Denatured

Restrictions: For Research Use only

Handling

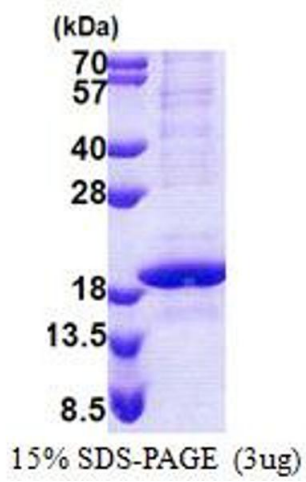
Format: Liquid

Concentration: 1.0 mg/mL

Buffer: Liquid. In 20 mM Tris-HCl buffer (pH 8.0) containing 0.4M urea 10 % glycerol

Storage: 4 °C,-20 °C,-80 °C

Storage Comment: Can be stored at +4C short term (1-2 weeks). For long term storage, aliquot and store at -20C or -70C. Avoid repeated freezing and thawing cycles.



SDS-PAGE

Image 1.