

Datasheet for ABIN5853165  
**CCDC25 Protein (AA 1-208) (His tag)**



[Go to Product page](#)

1 Image

## Overview

Quantity:	100 µg
Target:	CCDC25
Protein Characteristics:	AA 1-208
Origin:	Human
Source:	Escherichia coli (E. coli)
Protein Type:	Recombinant
Purification tag / Conjugate:	This CCDC25 protein is labelled with His tag.
Application:	SDS-PAGE (SDS)

## Product Details

Sequence: MGSSHHHHHH SSSLVPRGSH MGSMVFYFTS SSVNSSAYTI YMGKDKYENE DLIKHGWPE  
IWFHVDKLSS AHVYLRHLHG ENIEDIPKEV LMDCAHLVKA NSIQGCKMNN VNVVYTPWSN  
LKKTADMVVG QIGFHRQKDV KIVTVEKKVN EILNRLEKTK VERFPDLAAE KECRDREERN  
EKKAQIQEMK KREKEEMKKK REMDELRSYS SLMKVENMSS NQDGNDSDEF M

Purity: > 90 % by SDS - PAGE

## Target Details

Target:	CCDC25
Alternative Name:	CCDC25 ( <a href="#">CCDC25 Products</a> )
Background:	CCDC25 is a 208 amino acid protein that belongs to the CCDC25 family. Recombinant human CCDC25 protein, fused to His-tag at N-terminus, was expressed in E.coli and purified by using

## Target Details

conventional chromatography techniques

Molecular Weight: 26.9 kDa (231aa) confirmed by MALDI-TOF

NCBI Accession: [NP\\_060716](#)

UniProt: [Q86WR0](#)

## Application Details

Application Notes: Optimal working dilution should be determined by the investigator.

Restrictions: For Research Use only

## Handling

Format: Liquid

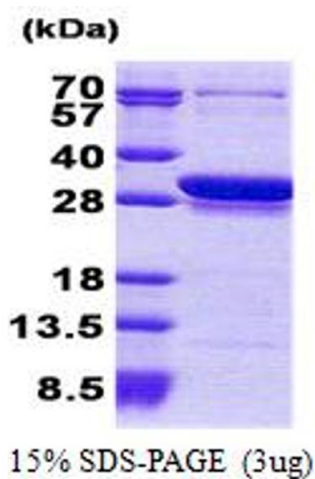
Concentration: 1 mg/mL

Buffer: Liquid. In 20 mM Tris-HCl buffer ( pH 8.0) containing 0.15M NaCl, 20 % glycerol, 1 mM DTT

Storage: 4 °C,-20 °C,-80 °C

Storage Comment: Can be stored at +4C short term (1-2 weeks). For long term storage, aliquot and store at -20C or -70C. Avoid repeated freezing and thawing cycles.

## Images



### SDS-PAGE

Image 1.