



[Go to Product page](#)

Datasheet for ABIN5853185

ISOC2 Protein (AA 59-205) (His tag)

1 Image

Overview

Quantity:	50 µg
Target:	ISOC2
Protein Characteristics:	AA 59-205
Origin:	Human
Source:	Escherichia coli (E. coli)
Protein Type:	Recombinant
Purification tag / Conjugate:	This ISOC2 protein is labelled with His tag.
Application:	SDS-PAGE (SDS)

Product Details

Sequence: MGSSHHHHHH SSSLVPRGSH MGSEQYPQGL GPTVPELGTE GLRPLAKTCF SMVPALQQEL
DSRPQLRSVL LCGIEAQACI LNTTLDLLDR GLQVHVWVDA CSSRSQVDRL VALARMRQSG
AFLSTSEGLI LQLVGDAVHP QFKEIQKLIK EPAPDSGLLG LFQQQNSLLH

Purity: > 90 % by SDS - PAGE

Target Details

Target: ISOC2

Alternative Name: ISOC2 ([ISOC2 Products](#))

Background: ISOC2 belongs to the isochorismatase family. This protein is localized in mitochondrion, cytoplasm, and nucleus. ISOC2 interacts with CDKN2A and localizes to the nucleus in the presence of CDKN2A. Recombinant human ISOC2 protein, fused to His-tag at N-terminus, was

Target Details

expressed in E.coli.

Molecular Weight: 18 kDa (170aa)

NCBI Accession: [NP_001129673](#)

UniProt: [Q96AB3](#)

Application Details

Application Notes: Optimal working dilution should be determined by the investigator.

Comment: Denatured

Restrictions: For Research Use only

Handling

Format: Liquid

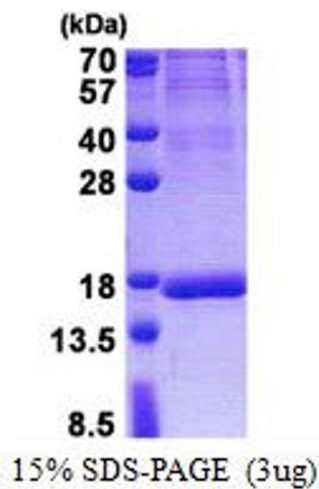
Concentration: 0.5 mg/mL

Buffer: Liquid. In 20 mM Tris-HCl buffer (pH 8.0) containing 0.4M urea, 10 % glycerol

Storage: 4 °C,-20 °C,-80 °C

Storage Comment: Can be stored at +4C short term (1-2 weeks). For long term storage, aliquot and store at -20C or -70C. Avoid repeated freezing and thawing cycles.

Images



SDS-PAGE

Image 1.