



[Go to Product page](#)

Datasheet for ABIN5853195

TINAGL1 Protein (AA 22-467) (His tag)

1 Image

Overview

Quantity:	50 µg
Target:	TINAGL1
Protein Characteristics:	AA 22-467
Origin:	Human
Source:	Escherichia coli (E. coli)
Protein Type:	Recombinant
Purification tag / Conjugate:	This TINAGL1 protein is labelled with His tag.
Application:	SDS-PAGE (SDS)

Product Details

Sequence:	MGSSHHHHHH SSSLVPRGSH MGSAQQGRGR RELAPGLHLR GIRDAGGRYC QEQDLCCRGR ADDICALPYLG AICYCDLFCN RTVSDCCPDF WDFCLGVPPP FPPIQGCMHG GRIYPVLGTY WDNCNRCTCQ ENRQWQCDQE PCLVDPDMIK AINQGNYGWQ AGNHSAFWGM TLDEGIRYRL GTIRPSSSVN NMHEIYTVLN PGEVLPTAFE ASEKWPNIH EPLDQGNCAG SWAFSTAAVA SDRVSISLHG HMTPLVSPQN LLSCDTHQQQ GCRGGRLDGA WWFLRRRGVV SDHCYPFSGR ERDEAGPAPP CMMHSRAMGR GKRQATAHCP NSYVNNNDIY QVTPVYRLGS NDKEIMKELM ENGPVQALME VHEDFFLYKG GIYSHTPVSL GRPERYRRHG THSVKITGWG EETLPDGRTL KYWTAANSWG PAWGERGHFR IVRGVNECDI ESFVLGVWGR VGMEDMGHH
Purity:	> 85 % by SDS - PAGE

Target Details

Target:	TINAGL1
---------	---------

Target Details

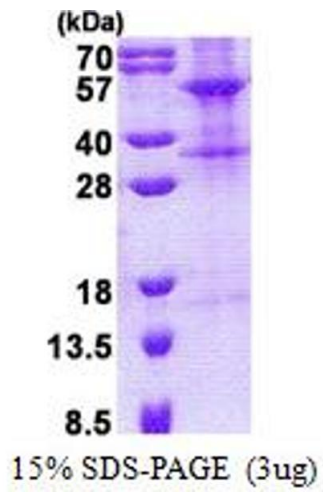
Alternative Name:	TINAGL1 (TINAGL1 Products)
Background:	<p>TINAGL1 is similar in sequence to tubulointerstitial nephritis antigen, a secreted glycoprotein that is recognized by antibodies in some types of immune-related tubulointerstitial nephritis.</p> <p>Three transcript variants encoding different isoforms have been found for this gene.</p> <p>Recombinant human TINAGL1 protein, fused to His-tag at N-terminus, was expressed in E.coli.</p>
Molecular Weight:	52.5 kDa (469aa)
NCBI Accession:	NP_071447
UniProt:	Q9GZM7

Application Details

Application Notes:	Optimal working dilution should be determined by the investigator.
Comment:	Denatured
Restrictions:	For Research Use only

Handling

Format:	Liquid
Concentration:	0.25 mg/mL
Buffer:	Liquid. In 20 mM Tris-HCl buffer (pH 8.0) containing 0.4M urea, 10 % glycerol
Storage:	4 °C,-20 °C,-80 °C
Storage Comment:	Can be stored at +4C short term (1-2 weeks). For long term storage, aliquot and store at -20C or -70C. Avoid repeated freezing and thawing cycles.



SDS-PAGE

Image 1.