

Datasheet for ABIN5853215
PIP Protein (AA 29-146) (His tag)



[Go to Product page](#)

1 Image

Overview

Quantity:	100 µg
Target:	PIP
Protein Characteristics:	AA 29-146
Origin:	Human
Source:	Escherichia coli (E. coli)
Protein Type:	Recombinant
Purification tag / Conjugate:	This PIP protein is labelled with His tag.
Application:	SDS-PAGE (SDS)

Product Details

Sequence:	MGSSHHHHHH SSSLVPRGSH MGSQDNTRKI IKNFDIPKS VRPNDEVAV LAVQTELKEC MVKTYLISS IPLQGAFNYK YTAQLCDDNP KTFYWDFYTN RTVQIAAVVD VIRELGICPD DAAVIPIKNN RFYTIEILKV E
Purity:	> 90 % by SDS - PAGE

Target Details

Target:	PIP
Alternative Name:	PIP (PIP Products)
Background:	Prolactin-inducible protein, also known as PIP, is a major protein component of benign breast gross cysts. It is a known marker of breast cancer, as it is found in approximately 50 % of all breast cancer specimens. It is expressed in exocrine glands and, in pathologic conditions, in

Target Details

breast cysts and breast cancers exhibiting apocrine features. PIP and prostate specific antigen are co-expressed in androgen receptor-positive breast tumours. Recombinant human PIP protein, fused to His-tag at N-terminus, was expressed in E.coli.

Molecular Weight: 15.9 kDa (141aa)

NCBI Accession: [NP_002643](#)

UniProt: [P12273](#)

Application Details

Application Notes: Optimal working dilution should be determined by the investigator.

Comment: Denatured

Restrictions: For Research Use only

Handling

Format: Liquid

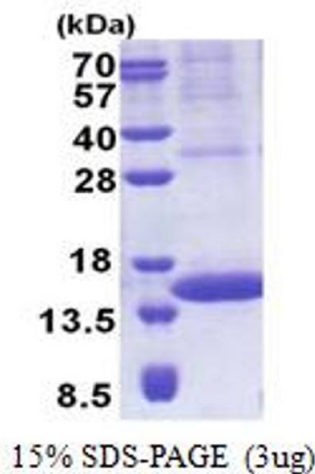
Concentration: 1 mg/mL

Buffer: Liquid. In 20 mM Tris-HCl buffer (pH 8.0) containing 0.4M urea, 10 % glycerol

Storage: 4 °C,-20 °C,-80 °C

Storage Comment: Can be stored at +4C short term (1-2 weeks). For long term storage, aliquot and store at -20C or -70C. Avoid repeated freezing and thawing cycles.

Images



SDS-PAGE

Image 1.