

Datasheet for ABIN5853242

**EBNA1BP2 Protein (AA 1-306) (His tag)**[Go to Product page](#)**1** Image

## Overview

Quantity:	100 µg
Target:	EBNA1BP2
Protein Characteristics:	AA 1-306
Origin:	Human
Source:	Escherichia coli (E. coli)
Protein Type:	Recombinant
Purification tag / Conjugate:	This EBNA1BP2 protein is labelled with His tag.
Application:	SDS-PAGE (SDS)

## Product Details

Sequence: MGSSHHHHHH SSSLVPRGSH MGSMDTPPLS DSESEDES L VTDRELQDAF SRGLLKPGLN  
VVLEGPKKAV NDVNLKQCL AEFKRDLEWV ERLDVTLGPV PEIGGSEAPA PQNKDQKAVD  
PEDDFQREMS FYRQAQAAVL AVLPRHLQLK VPTKRPTDYF AEMAKSDLQM QKIRQLQTK  
QAAMERSEKA KQLRALRKYG KKVQTEVLQK RQEKAHMMN AIKKYQKGFS DKLDFLEGDQ  
KPLAQRKKAG AKGQQMRKGP SAKRRYKNQK FGFGGKKKGS KWNTRESYDD VSSFRAKTAH  
GRGLKRP GKK GSNKRPGKRT REKMKNRTH

Purity: > 80 % by SDS - PAGE

## Target Details

Target:	EBNA1BP2
Alternative Name:	EBNA1BP2 ( <a href="#">EBNA1BP2 Products</a> )

## Target Details

---

**Background:** EBNA1BP2 belongs to the EBP2 family. This protein is required for the processing of the 27S pre-rRNA. It specifically interacts with EBV EBNA1 and the EBNA1-EBP2 interaction is important for the stable segregation of EBV episomes during cell division. Recombinant human EBNA1BP2 protein, fused to His-tag at N-terminus, was expressed in E.coli .

---

**Molecular Weight:** 37.2 kDa (329aa)

---

**NCBI Accession:** [NP\\_006815](#)

---

**UniProt:** [Q99848](#)

---

## Application Details

---

**Application Notes:** Optimal working dilution should be determined by the investigator.

---

**Comment:** Denatured

---

**Restrictions:** For Research Use only

---

## Handling

---

**Format:** Liquid

---

**Concentration:** 0.5 mg/mL

---

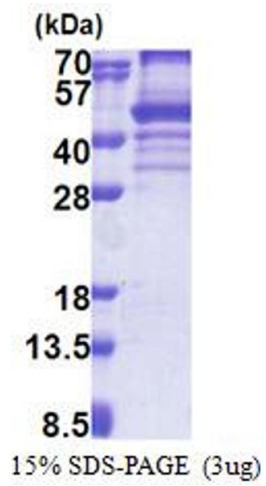
**Buffer:** Liquid. In 20 mM Tris-HCl buffer ( pH 8.0) containing 10 % glycerol, 0.4M urea

---

**Storage:** 4 °C,-20 °C,-80 °C

---

**Storage Comment:** Can be stored at +4C short term (1-2 weeks). For long term storage, aliquot and store at -20C or -70C. Avoid repeated freezing and thawing cycles.



### SDS-PAGE

Image 1.