

Datasheet for ABIN5853250
RPL35A Protein (AA 1-110) (His tag)



[Go to Product page](#)

1 Image

Overview

Quantity:	100 µg
Target:	RPL35A
Protein Characteristics:	AA 1-110
Origin:	Human
Source:	Escherichia coli (E. coli)
Protein Type:	Recombinant
Purification tag / Conjugate:	This RPL35A protein is labelled with His tag.
Application:	SDS-PAGE (SDS)

Product Details

Sequence: MGSSHHHHHH SSSLVPRGSH MGSMGRLWS KAIFAGYKRG LRNQREHTAL LKIEGVYARD
ETEFYLGKRC AYVYKAKNNT VTPGGKPNKT RVIWGVKTRA HGNSGMVRAK FRSNLPKAI
GHRIRVMLYP SRI

Purity: > 85 % by SDS - PAGE

Target Details

Target:	RPL35A
Alternative Name:	RPL35A (RPL35A Products)
Background:	Ribosomes, the organelles that catalyze protein synthesis, consist of a small 40S subunit and a large 60S subunit. Together these subunits are composed of 4 RNA species and approximately 80 structurally distinct proteins. RPL35A is a ribosomal protein that is a component of the 60S

Target Details

subunit. The protein belongs to the L35AE family of ribosomal proteins. It is located in the cytoplasm. The rat protein has been shown to bind to both initiator and elongator tRNAs, and thus, it is located at the P site, or P and A sites, of the ribosome. Although this gene was originally mapped to chromosome 18, it has been established that it is located at 3q29-qter. Transcript variants utilizing alternative transcription initiation sites and alternative polyA signals exist. As is typical for genes encoding ribosomal proteins, there are multiple processed pseudogenes of this gene dispersed through the genome. Recombinant human RPL35A protein, fused to His-tag at N-terminus, was expressed in E.coli.

Molecular Weight: 14.9 kDa (133aa)

NCBI Accession: [NP_000987](#)

UniProt: [P18077](#)

Application Details

Application Notes: Optimal working dilution should be determined by the investigator.

Comment: Denatured

Restrictions: For Research Use only

Handling

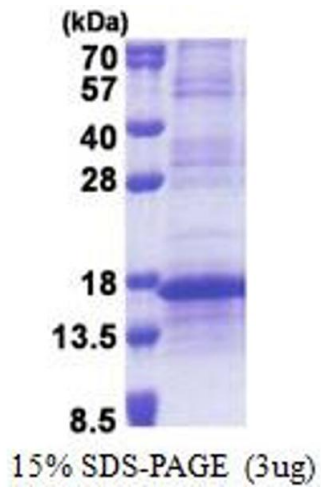
Format: Liquid

Concentration: 0.5 mg/mL

Buffer: Liquid. In 20 mM Tris-HCl buffer (pH 8.0) containing 0.4M urea, 10 % glycerol

Storage: 4 °C,-20 °C,-80 °C

Storage Comment: Can be stored at +4C short term (1-2 weeks). For long term storage, aliquot and store at -20C or -70C. Avoid repeated freezing and thawing cycles.



SDS-PAGE

Image 1.