



[Go to Product page](#)

Datasheet for ABIN5853285

## PLAC8 Protein (AA 1-115) (His tag)

### 1 Image

#### Overview

Quantity:	100 µg
Target:	PLAC8
Protein Characteristics:	AA 1-115
Origin:	Human
Source:	Escherichia coli (E. coli)
Protein Type:	Recombinant
Purification tag / Conjugate:	This PLAC8 protein is labelled with His tag.
Application:	SDS-PAGE (SDS)

#### Product Details

Sequence:	MGSSHHHHHH SSSLVPRGSH MGSMQAQAPV VVVTQPGVGP GPAPQNSNWQ TGMCDCFSDC GVCLCGTFCF PCLGCQVAAD MNECCLCGTS VAMRTLYRTR YGIPGSICDD YMATLCCPHC TLCQIKRDIN RRRAMRTF
Purity:	> 85 % by SDS - PAGE

#### Target Details

Target:	PLAC8
Alternative Name:	PLAC8 ( <a href="#">PLAC8 Products</a> )
Background:	PLAC8 belongs to the cornifelin family. This protein is expressed at high levels in plasmacytoid dendritic cells, spleen, lymph nodes, peripheral blood leukocytes, and bone marrow. Recombinant human PLAC8 protein, fused to His-tag at N-terminus, was expressed in E.coli.

## Target Details

Molecular Weight:	14.9 kDa (138aa)
NCBI Accession:	<a href="#">NP_001124188</a>
UniProt:	<a href="#">Q9NZF1</a>
Pathways:	<a href="#">Brown Fat Cell Differentiation</a>

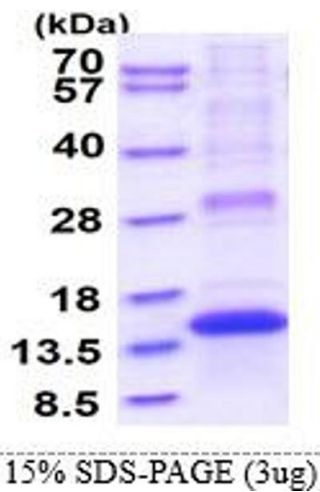
## Application Details

Application Notes:	Optimal working dilution should be determined by the investigator.
Comment:	Denatured
Restrictions:	For Research Use only

## Handling

Format:	Liquid
Concentration:	1 mg/mL
Buffer:	Liquid. In 20 mM Tris-HCl buffer ( pH 8.0) containing 10 % glycerol, 0.4M urea
Storage:	4 °C,-20 °C,-80 °C
Storage Comment:	Can be stored at +4C short term (1-2 weeks). For long term storage, aliquot and store at -20C or -70C. Avoid repeated freezing and thawing cycles.

## Images



### SDS-PAGE

Image 1.