



[Go to Product page](#)

Datasheet for ABIN5853298  
**CRIP1 Protein (AA 1-77) (His tag)**

1 Image

Overview

Quantity:	100 µg
Target:	CRIP1
Protein Characteristics:	AA 1-77
Origin:	Human
Source:	Escherichia coli (E. coli)
Protein Type:	Recombinant
Purification tag / Conjugate:	This CRIP1 protein is labelled with His tag.
Application:	SDS-PAGE (SDS)

Product Details

Sequence:	MGSSHHHHHH SSSLVPRGSH MGSMPKCPKC NKEVYFAERV TSLGKDWHRP CLKCEKCGKT LTSGGHAEHE GKPVCNHPCY AAMFGPKGFG RGGAESHTFK
Purity:	> 95 % by SDS - PAGE

Target Details

Target:	CRIP1
Alternative Name:	CRIP1 ( <a href="#">CRIP1 Products</a> )
Background:	Cysteine-rich intestinal protein (CRIP) belongs to the LIM/double zinc finger protein family, members of which include cysteine- and glycine-rich protein-1, rhombotin-1, rhombotin-2, and rhombotin-3. CRIP may be involved in intestinal zinc transport. Recombinant human CRIP1 protein, fused to His-tag at N-terminus, was expressed in E.coli and purified by using

## Target Details

conventional chromatography techniques.

Molecular Weight: 10.9 kDa (100aa) confirmed by MALDI-TOF

NCBI Accession: [NP\\_001302](#)

UniProt: [P50238](#)

## Application Details

Application Notes: Optimal working dilution should be determined by the investigator.

Restrictions: For Research Use only

## Handling

Format: Liquid

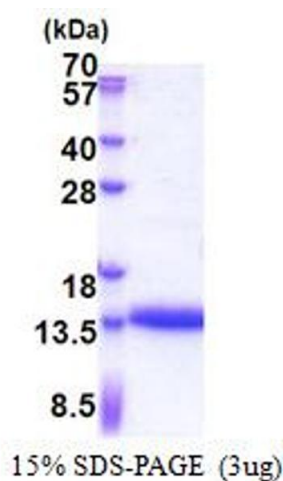
Concentration: 0.25 mg/mL

Buffer: Liquid. In 20 mM Tris-HCl( pH 8.0) containing 20 % glycerol, 0.15M NaCl, 1 mM DTT

Storage: 4 °C,-20 °C,-80 °C

Storage Comment: Can be stored at +4C short term (1-2 weeks). For long term storage, aliquot and store at -20C or -70C. Avoid repeated freezing and thawing cycles.

## Images



### SDS-PAGE

Image 1.