

Datasheet for ABIN5853308
RPS18 Protein (AA 1-152) (His tag)[Go to Product page](#)

1 Image

Overview

Quantity:	100 µg
Target:	RPS18
Protein Characteristics:	AA 1-152
Origin:	Human
Source:	Escherichia coli (E. coli)
Protein Type:	Recombinant
Purification tag / Conjugate:	This RPS18 protein is labelled with His tag.
Application:	SDS-PAGE (SDS)

Product Details

Sequence:	MGSSHHHHHH SSSLVPRGSH MGSM SLVIPE KFQHILRVLN TNIDGRRKIA FAITAIKGVG RRYAHVVLRLK ADIDLTKRAG ELTEDEVERV ITIMQNPRQY KIPDWFLNRQ KDVKDGKYSQ VLANGLDNKL REDLERLKKI RAHRGLRHFW GLRVRGQHTK TTGRRGRTVG VSKKK
Purity:	> 90 % by SDS - PAGE

Target Details

Target:	RPS18
Alternative Name:	RPS18 (RPS18 Products)
Background:	40S ribosomal protein S18, also known as RPS18, belongs to the ribosomal protein S13P family. Ribosomes, the organelles that catalyze protein synthesis, consist of a small 40S subunit and a large 60S subunit. RPS18 is a known binding partner of Cofilin and has been

Target Details

	suggested to be a novel substrate for CaMKII. Recombinant human RPS18 protein, fused to His-tag at N-terminus, was expressed in E.coli.
Molecular Weight:	20.1 kDa (175aa)
NCBI Accession:	NP_072045
UniProt:	P62269

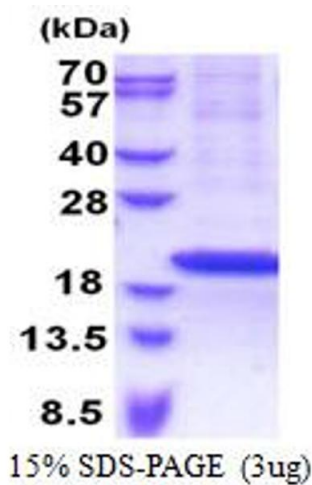
Application Details

Application Notes:	Optimal working dilution should be determined by the investigator.
Comment:	Denatured
Restrictions:	For Research Use only

Handling

Format:	Liquid
Concentration:	0.5 mg/mL
Buffer:	Liquid. In 20 mM Tris-HCl buffer (pH 8.0) containing 0.4M urea, 10 % glycerol
Storage:	4 °C,-20 °C,-80 °C
Storage Comment:	Can be stored at +4C short term (1-2 weeks). For long term storage, aliquot and store at -20C or -70C. Avoid repeated freezing and thawing cycles.

Images



SDS-PAGE

Image 1.