

Datasheet for ABIN5853331

Ectodysplasin A2 Receptor Protein (EDA2R) (AA 1-138) (His tag)[Go to Product page](#)**1** Image

Overview

Quantity:	100 µg
Target:	Ectodysplasin A2 Receptor (EDA2R)
Protein Characteristics:	AA 1-138
Origin:	Human
Source:	Escherichia coli (E. coli)
Protein Type:	Recombinant
Purification tag / Conjugate:	This Ectodysplasin A2 Receptor protein is labelled with His tag.
Application:	SDS-PAGE (SDS)

Product Details

Sequence:	MGSSHHHHHH SSSLVPRGSH MGSMDQCENE YWDQWGRCVT CQRCGPGQEL SKDCGYGEGG DAYCTACPPR RYKSSWGHHR CQSCITCAVI NRVQKVNCTA TSNVCGDCL PRFYRKTRIG GLQDQECIPC TKQTPTSEVQ CAFQLSLVEA DAPTVPPEA T
Purity:	> 90 % by SDS - PAGE

Target Details

Target:	Ectodysplasin A2 Receptor (EDA2R)
Alternative Name:	EDA2R (EDA2R Products)
Background:	EDA-A1 and EDA-A2 are two isoforms of ectodysplasin that are encoded by the anhidrotic ectodermal dysplasia (EDA) gene. Mutations in EDA give rise to a clinical syndrome characterized by loss of hair, sweat glands, and teeth. EDA2R specifically binds to EDA-A2

Target Details

isoform. This protein is a type III transmembrane protein of the TNFR (tumor necrosis factor receptor) superfamily, and contains 3 cysteine-rich repeats and a single transmembrane domain but lacks an N-terminal signal peptide. Alternatively spliced transcript variants have been found for this gene. Recombinant human EDA2R protein , fused to His-tag at N-terminus, was expressed in E.coli.

Molecular Weight: 17.7 kDa (161aa)

NCBI Accession: [NP_001229239](#)

UniProt: [Q9HAV5](#)

Application Details

Application Notes: Optimal working dilution should be determined by the investigator.

Comment: Denatured

Restrictions: For Research Use only

Handling

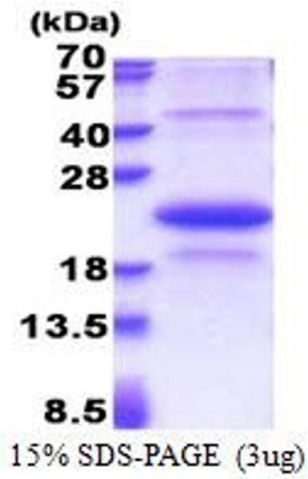
Format: Liquid

Concentration: 1 mg/mL

Buffer: Liquid. 20 mM Tris-HCl buffer (pH 8.0) containing 10 % glycerol 0.4M urea

Storage: 4 °C,-20 °C,-80 °C

Storage Comment: Can be stored at +4C short term (1-2 weeks). For long term storage, aliquot and store at -20C or -70C. Avoid repeated freezing and thawing cycles.



SDS-PAGE

Image 1.