

Datasheet for ABIN5853339  
**TCL1B Protein (AA 1-128) (His tag)**



[Go to Product page](#)

1 Image

## Overview

Quantity:	100 µg
Target:	TCL1B
Protein Characteristics:	AA 1-128
Origin:	Human
Source:	Escherichia coli (E. coli)
Protein Type:	Recombinant
Purification tag / Conjugate:	This TCL1B protein is labelled with His tag.
Application:	SDS-PAGE (SDS)

## Product Details

Sequence:	MGSSHHHHHH SSSLVPRGSH MGSMASEASV RLGVPPLRLW IQRPGIYEDE EGRTWVTVVV RFNPSRREWA RASQGSRYEP SITVHLWQMA VHTRELLSSG QMPFSQLPAV WQLYPGRKYR AADSSFWEIA DHGQIDSMEQ LVLTYQPERK D
Purity:	> 95 % by SDS - PAGE

## Target Details

Target:	TCL1B
Alternative Name:	TCL1B ( <a href="#">TCL1B Products</a> )
Background:	TCL1B belongs to the TCL1 family and is expressed in a variety of tissues including placenta and testis. This protein enhances the phosphorylation and activation of AKT1 and AKT2.  Recombinant human TCL1B protein, fused to His-tag at N-terminus, was expressed in E.coli

## Target Details

and purified by using conventional chromatography techniques.

Molecular Weight: 17.2 kDa (151aa) confirmed by MALDI-TOF

NCBI Accession: [NP\\_004909](#)

UniProt: [O95988](#)

## Application Details

Application Notes: Optimal working dilution should be determined by the investigator.

Restrictions: For Research Use only

## Handling

Format: Liquid

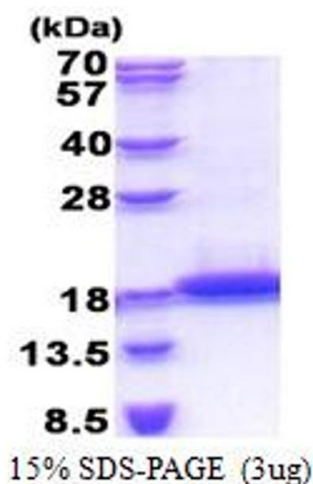
Concentration: 0.5 mg/mL

Buffer: Liquid. In 20 mM Tris-HCl buffer ( pH 8.0) containing 0.2M NaCl, 40 % glycerol, 2 mM DTT

Storage: 4 °C,-20 °C,-80 °C

Storage Comment: Can be stored at +4C short term (1-2 weeks). For long term storage, aliquot and store at -20C or -70C. Avoid repeated freezing and thawing cycles.

## Images



### SDS-PAGE

Image 1.