

Datasheet for ABIN5853350  
**TBC1D1 Protein (AA 1-265) (His tag)**



[Go to Product page](#)

1 Image

## Overview

Quantity:	100 µg
Target:	TBC1D1
Protein Characteristics:	AA 1-265
Origin:	Human
Source:	Escherichia coli (E. coli)
Protein Type:	Recombinant
Purification tag / Conjugate:	This TBC1D1 protein is labelled with His tag.
Application:	SDS-PAGE (SDS)

## Product Details

Sequence: MGSSHHHHHH SSSLVPRGSH MGSMSEEEAF KMLKFLMFDL GLRKQYRPDM IILQIQMYQL  
SRLLDHYHRD LYNHLEEHEI GPSLYAAPWF LTMFASQFPL GFVARVFDLMI FLQGTEVIFK  
VALSLLGSHK PLILQHENLE TIVDFIKSTL PNLGLVQMEK TINQVFEMDI AKQLQAYEVE  
YHVLQEELID SSPLSDNQRM DKLEKTNSSL RKQNLDLLEQ LQVANGRIQS LEATIEKLLS  
SESKLKQAML TLELERSALL QTVEELRRRS AEPDREPEC TQPEPTGD

Purity: > 90 % by SDS - PAGE

## Target Details

Target:	TBC1D1
Alternative Name:	TBC1D1 ( <a href="#">TBC1D1 Products</a> )
Background:	TBC1 (tre-2/uSP6, BuB2, cdc16) domain family, member 1, also known as TBC1D1, may act as

## Target Details

a GTPase-activating protein for Rab family protein(s). This protein may play a role in the cell cycle and differentiation of various tissues. This protein is involved in the trafficking and translocation of GLuT4-containing vesicles and insulin-stimulated glucose uptake into cells. Recombinant human TBC1D1 protein, fused to His-tag at N-terminus, was expressed in E.coli.

Molecular Weight: 33.2 kDa (288aa)

NCBI Accession: [NP\\_001240842](#)

## Application Details

Application Notes: Optimal working dilution should be determined by the investigator.

Comment: Denatured

Restrictions: For Research Use only

## Handling

Format: Liquid

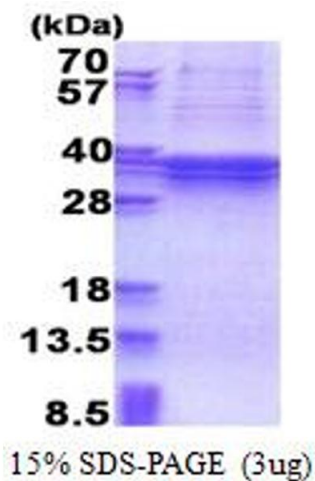
Concentration: 1 mg/mL

Buffer: Liquid. 20 mM Tris-HCl buffer ( pH 8.0) containing 10 % glycerol 0.4M urea

Storage: 4 °C,-20 °C,-80 °C

Storage Comment: Can be stored at +4C short term (1-2 weeks). For long term storage, aliquot and store at -20C or -70C. Avoid repeated freezing and thawing cycles.

## Images



### SDS-PAGE

Image 1.