

Datasheet for ABIN5853387

**SHFM1 Protein (AA 1-70) (His tag)**[Go to Product page](#)**1** Image

## Overview

Quantity:	50 µg
Target:	SHFM1
Protein Characteristics:	AA 1-70
Origin:	Human
Source:	Escherichia coli (E. coli)
Protein Type:	Recombinant
Purification tag / Conjugate:	This SHFM1 protein is labelled with His tag.
Application:	SDS-PAGE (SDS)

## Product Details

Sequence:	MGSSHHHHHH SSSLVPRGSH MGSMSEKKQP VDLGLLEEDD EEEEEPAEDW AGLDEDEDAH VWEDNWDDDN VEDDFSNQLR AELEKHGYKM ETS
Purity:	> 85 % by SDS - PAGE

## Target Details

Target:	SHFM1
Alternative Name:	SHFM1 ( <a href="#">SHFM1 Products</a> )
Background:	SHFM1, as known as 26S proteasome complex subunit DSS1, has been proposed to be a candidate gene for the autosomal dominant form of the heterogeneous limb developmental disorder split hand/split foot malformation type 1. In addition, it has been shown to directly interact with BRCA2. It also may play a role in the completion of the cell cycle. Recombinant

## Target Details

human SHFM1 protein, fused to His-tag at N-terminus, was expressed in E.coli and purified by using conventional chromatography.

Molecular Weight: 10.7kDa (93aa) confirmed by MALDI-TOF (Molecular size on SDS-PAGE will appear higher)

NCBI Accession: [NP\\_006295](#)

UniProt: [P60896](#)

## Application Details

Application Notes: Optimal working dilution should be determined by the investigator.

Restrictions: For Research Use only

## Handling

Format: Liquid

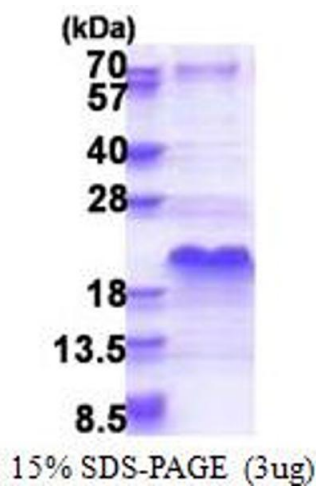
Concentration: 1 mg/mL

Buffer: Liquid. 20 mM Tris-HCl buffer ( pH 8.0) containing 10 % glycerol, 0.1M NaCl

Storage: 4 °C,-20 °C,-80 °C

Storage Comment: Can be stored at +4C short term (1-2 weeks). For long term storage, aliquot and store at -20C or -70C. Avoid repeated freezing and thawing cycles.

## Images



### SDS-PAGE

Image 1.