

Datasheet for ABIN5853442  
**CENPQ Protein (AA 1-268) (His tag)**



[Go to Product page](#)

1 Image

## Overview

Quantity:	100 µg
Target:	CENPQ
Protein Characteristics:	AA 1-268
Origin:	Human
Source:	Escherichia coli (E. coli)
Protein Type:	Recombinant
Purification tag / Conjugate:	This CENPQ protein is labelled with His tag.
Application:	SDS-PAGE (SDS)

## Product Details

Sequence:	MGSSHHHHHH SSSLVPRGSH MGSMGKANA SKKNAQQLKR NPKRKKDNEE VVLSenkVRN TVKKNKNHLK DLSSEGQTKH TNLKHGKTAA SKRKTWQPLS KSTRDHLQTM MESVIMTILS NSIKEKEEIQ YHLNFLKKRL LQCETLKVP PKKMEDLTNV SLLNMERAR DKANEEGLAL LQEEIDKMVE TTELMTGNIQ SLKNKIQLA SEVEEEERV KQMHQINSSG VLSPeLSQK TLKAPTlQKE ILALIPNqNA LLKDLdILHN SSQMkSMSTF IEEAYkKLDA S
Purity:	>85 % by SDS - PAGE

## Target Details

Target:	CENPQ
Alternative Name:	CENPQ ( <a href="#">CENPQ Products</a> )
Background:	CENPQ is a subunit of a CENPH-CENPI-associated centromeric complex that targets CENPA to

## Target Details

centromeres and is required for proper kinetochore function and mitotic progression.

Recombinant human CENPQ protein, fused to His-tag at N-terminus, was expressed in E.coli.

Molecular Weight: 33.0kDa (291aa)

NCBI Accession: [NP\\_060602](#)

UniProt: [Q7L2Z9](#)

## Application Details

Application Notes: Optimal working dilution should be determined by the investigator.

Comment: Denatured

Restrictions: For Research Use only

## Handling

Format: Liquid

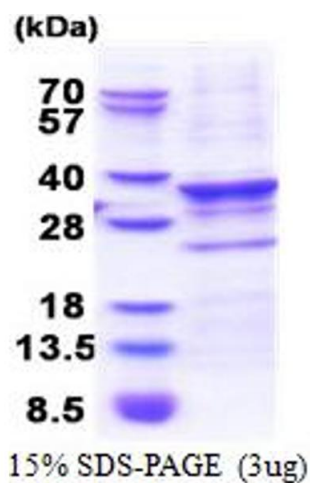
Concentration: 1 mg/mL

Buffer: Liquid. In 20 mM Tris-HCl buffer ( pH 8.0) containing 10 % glycerol

Storage: 4 °C,-20 °C,-80 °C

Storage Comment: Can be stored at +4C short term (1-2 weeks). For long term storage, aliquot and store at -20C or -70C. Avoid repeated freezing and thawing cycles.

## Images



### SDS-PAGE

Image 1.