

Datasheet for ABIN5853486

**MX2 Protein (AA 626-715) (His tag)**[Go to Product page](#)**1** Image

## Overview

Quantity:	100 µg
Target:	MX2
Protein Characteristics:	AA 626-715
Origin:	Human
Source:	Escherichia coli (E. coli)
Protein Type:	Recombinant
Purification tag / Conjugate:	This MX2 protein is labelled with His tag.
Application:	SDS-PAGE (SDS)

## Product Details

Sequence:	MRGSHHHHHH GMASMTGGQQ MGRDLYDDDD KDRWGSIGIH LNAYFLETSK RLANQIPFII QYFMLRENGD SLQKAMMQIL QEKNRYSWLL QEQSETATKR RILKERIYRL TQARHALCQF SSKEIH
Purity:	> 90 % by SDS - PAGE

## Target Details

Target:	MX2
Alternative Name:	MX2 ( <a href="#">MX2 Products</a> )
Background:	MX2 has a nuclear and a cytoplasmic form and is a member of both the dynamin family and the family of large GTPases. The nuclear form is localized in a granular pattern in the heterochromatin region beneath the nuclear envelope. A nuclear localization signal (NLS) is

## Target Details

present at the amino terminal end of the nuclear form but is lacking in the cytoplasmic form due to use of an alternate translation start codon. This protein is upregulated by interferon-alpha but does not contain the antiviral activity of a similar myxovirus resistance protein 1. Recombinant human MX2 protein, fused to His-tag at N-terminus, was expressed in E.coli.

Molecular Weight: 14.9 kDa (126aa)

NCBI Accession: [NP\\_002454](#)

UniProt: [P20592](#)

## Application Details

Application Notes: Optimal working dilution should be determined by the investigator.

Comment: Denatured

Restrictions: For Research Use only

## Handling

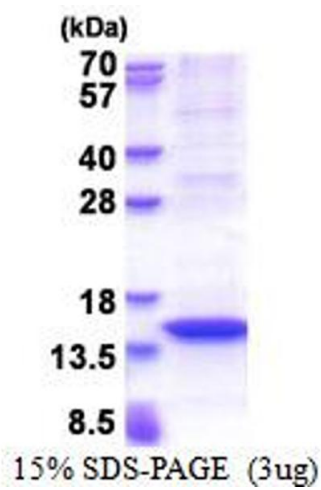
Format: Liquid

Concentration: 1 mg/mL

Buffer: Liquid. In 20 mM Tris-HCl buffer ( pH 8.0) containing 0.4M urea, 10 % glycerol

Storage: 4 °C,-20 °C,-80 °C

Storage Comment: Can be stored at +4C short term (1-2 weeks). For long term storage, aliquot and store at -20C or -70C. Avoid repeated freezing and thawing cycles.



SDS-PAGE
Image 1.