

Datasheet for ABIN5853512
EAF1 Protein (AA 182-268) (His tag)



[Go to Product page](#)

1 Image

Overview

Quantity:	50 µg
Target:	EAF1
Protein Characteristics:	AA 182-268
Origin:	Human
Source:	Escherichia coli (E. coli)
Protein Type:	Recombinant
Purification tag / Conjugate:	This EAF1 protein is labelled with His tag.
Application:	SDS-PAGE (SDS)

Product Details

Sequence:	MGSSHHHHHH SSSLVPRGSH MGSDIIQMS SSSGSSSSDS ESSSGSDDDS SSSGGEDNGP ASPPQPSHQQ PYNSRPAVAN GTSRPQGSNQ LMNTRLNDLQ LSESGSDSDD
Purity:	> 95 % by SDS - PAGE

Target Details

Target:	EAF1
Alternative Name:	EAF1 (EAF1 Products)
Background:	EAF1 belongs to the EAF family and is strongly expressed in heart, brain, placenta, lung, liver, skeletal muscle, kidney, pancreas, spleen, prostate, testis, small intestine and colon. This protein acts as a transcriptional transactivator of ELL and ELL2 elongation activities. Recombinant human EAF1 protein, fused to His-tag at N-terminus, was expressed in E.coli and

Target Details

purified by using conventional chromatography techniques.

Molecular Weight: 11.3 kDa (110aa) confirmed by MALDI-TOF

NCBI Accession: [NP_149074](#)

UniProt: [Q96JC9](#)

Application Details

Application Notes: Optimal working dilution should be determined by the investigator.

Restrictions: For Research Use only

Handling

Format: Liquid

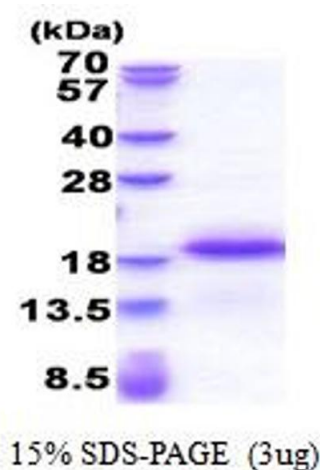
Concentration: 0.5 mg/mL

Buffer: Liquid. In 20 mM Tris-HCl buffer (pH 8.0) containing 0.15M NaCl, 10 % glycerol

Storage: 4 °C,-20 °C,-80 °C

Storage Comment: Can be stored at +4C short term (1-2 weeks). For long term storage, aliquot and store at -20C or -70C. Avoid repeated freezing and thawing cycles.

Images



SDS-PAGE

Image 1.