

Datasheet for ABIN5853528
MMP28 Protein (AA 123-520) (His tag)



[Go to Product page](#)

1 Image

Overview

Quantity:	100 µg
Target:	MMP28
Protein Characteristics:	AA 123-520
Origin:	Human
Source:	Escherichia coli (E. coli)
Protein Type:	Recombinant
Purification tag / Conjugate:	This MMP28 protein is labelled with His tag.
Application:	SDS-PAGE (SDS)

Product Details

Sequence: MGSSHHHHHH SSSLVPRGSH MGSFAKQGNK WYKQHLSYRL VNWPEHLPEP AVRGAVRAAF
QLWSNVSALE FWEAPATGPA DIRLTFFQGD HNDGLGNAFD GPGGALAHAF LPRRGEAHFD
QDERWLSRR RGRNLFVLA HEIGHTLGLT HSPAPRALMA PYYKRLGRDA LLSWDDVLAV
QSLYGKPLGG SVAVQLPGKL FTFETWDSY SPQGRRPETQ GPKYCHSSF AITVDRQQQL
YIFKGSWFVE VAADGNVSEP RPLQERWVGL PPNIEAAAVS LNDGDFYFFK GGRCWRFRGP
KPVWGLPQLC RAGGLPRHPD AALFFPLRR LILFKGARYY VLARGGLQVE PYYPRSLQDW
GGIPEEVSGA LPRPDGSIIF FRDDRYWRDL QAKLQATTSG RWATELPWMG CWHANSGSAL F

Purity: > 85 % by SDS - PAGE

Target Details

Target: MMP28

Target Details

Alternative Name: [MMP28 \(MMP28 Products\)](#)

Background: MMP28 protein of the matrix metalloproteinase (MMP) family is involved in the breakdown of extracellular matrix for both normal physiological processes, such as embryonic development, reproduction and tissue remodeling, and disease processes, such as asthma and metastasis. MMP28 is a secreted enzyme that degrades casein. Its expression pattern suggests that it plays a role in tissue homeostasis and in wound repair. Transcript variants encoding different isoforms have been described. Recombinant human MMP28 protein, fused to His-tag at N-terminus, was expressed in E.coli.

Molecular Weight: 47.3 kDa (421aa)

NCBI Accession: [NP_077278](#)

UniProt: [Q9H239](#)

Application Details

Application Notes: Optimal working dilution should be determined by the investigator.

Comment: Denatured

Restrictions: For Research Use only

Handling

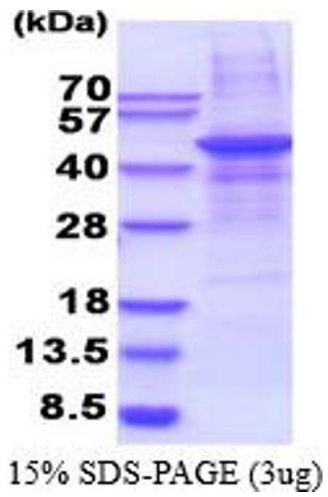
Format: Liquid

Concentration: 1 mg/mL

Buffer: Liquid. In 20 mM Tris-HCl buffer (pH 8.0) containing 0.4M urea, 10 % glycerol

Storage: 4 °C,-20 °C,-80 °C

Storage Comment: Can be stored at +4C short term (1-2 weeks). For long term storage, aliquot and store at -20C or -70C. Avoid repeated freezing and thawing cycles.



SDS-PAGE

Image 1.