

Datasheet for ABIN5853588  
**IYD Protein (AA 24-214) (His tag)**



[Go to Product page](#)

1 Image

## Overview

Quantity:	100 µg
Target:	IYD
Protein Characteristics:	AA 24-214
Origin:	Human
Source:	Escherichia coli (E. coli)
Protein Type:	Recombinant
Purification tag / Conjugate:	This IYD protein is labelled with His tag.
Application:	SDS-PAGE (SDS)

## Product Details

Sequence: MGSSHHHHHH SSSLVPRGSH MGSDRSMEKK KGEPRTRAEA RPWVDEDLKD SSDLHQAEED  
ADEWQESEEN VEHIPFSHNH YPEKEMVKRS QEFYELLNKR RSVRFISNEQ VPMEVIDNVI  
RTAGTAPSGA HTEPWTFVW KDPDVKHKIR KIIEEEEIN YMKRMGHRWW TDLKCLRNTW  
IKEYLDTAPI LILIFKQVHG FAANGKKKVH YYNE

Purity: > 90 % by SDS - PAGE

## Target Details

Target:	IYD
Alternative Name:	IYD ( <a href="#">IYD Products</a> )
Background:	IYD is an enzyme that catalyzes the oxidative NADPH-dependent deiodination of mono- and diiodotyrosine, which are the halogenated byproducts of thyroid hormone production. The N-

## Target Details

---

terminus of the protein functions as a membrane anchor. Mutations in this gene cause congenital hypothyroidism due to dysmorphogenesis type 4, which is also referred to as deiodinase deficiency, or iodotyrosine dehalogenase deficiency, or thyroid morphogenesis type 4. Alternative splicing results in multiple transcript variants. Recombinant human IYD protein, fused to His-tag at N-terminus, was expressed in E.coli.

Molecular Weight: 25.1kDa (214aa)

NCBI Accession: [NP\\_001158167](#)

UniProt: [Q6PHW0](#)

Pathways: [Thyroid Hormone Synthesis](#)

## Application Details

---

Application Notes: Optimal working dilution should be determined by the investigator.

Comment: Denatured

Restrictions: For Research Use only

## Handling

---

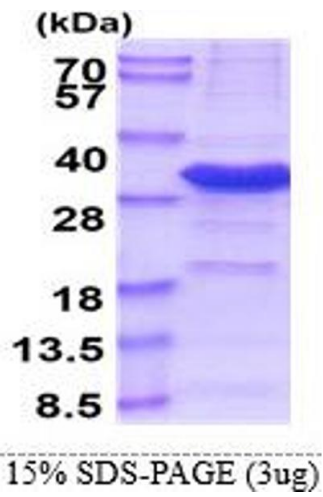
Format: Liquid

Concentration: 1 mg/mL

Buffer: Liquid. In 20 mM Tris-HCl buffer ( pH 8.0) containing 0.4M uREA, 10 % glycerol

Storage: 4 °C,-20 °C,-80 °C

Storage Comment: Can be stored at +4C short term (1-2 weeks). For long term storage, aliquot and store at -20C or -70C. Avoid repeated freezing and thawing cycles.



**SDS-PAGE**

Image 1.