

Datasheet for ABIN5853589

STEAP4 Protein (AA 1-152) (His tag)[Go to Product page](#)**1** Image

Overview

Quantity:	100 µg
Target:	STEAP4
Protein Characteristics:	AA 1-152
Origin:	Human
Source:	Escherichia coli (E. coli)
Protein Type:	Recombinant
Purification tag / Conjugate:	This STEAP4 protein is labelled with His tag.
Application:	SDS-PAGE (SDS)

Product Details

Sequence: MRGSHHHHHH GMASMTGGQQ MGRDLYDDDD KDRWGSMEKT CIDALPLTMN SSEKQETVCI
FGTGDFGRSL GLKMLQCGYS VVFGSRNPQK TTLLPSGAEV LSYSEAAKKS GIIIIAIHRE
HYDFLTELTE VLNGKILVDI SNNLKINQYP ESNAEYLAHL VPGAHVVKAF NTISAWALQS
GALDASRQ

Purity: > 90 % by SDS - PAGE

Target Details

Target:	STEAP4
Alternative Name:	STEAP4 (STEAP4 Products)
Background:	STEAP4 belongs to the STEAP (six transmembrane epithelial antigen of prostate) family, and resides in the golgi apparatus. It functions as a metalloreductase that has the ability to reduce

Target Details

both Fe(3+) to Fe(2+) and Cu(2+) to Cu(1+), using NAD(+) as acceptor. Studies in mice and human suggest that this gene maybe involved in adipocyte development and metabolism, and may contribute to the normal biology of the prostate cell, as well as prostate cancer progression. Alternatively spliced transcript variants encoding different isoforms have been found for this gene. Recombinant human STEAP4 protein, fused to His-tag at N-terminus, was expressed in E.coli.

Molecular Weight: 20.6kDa (188aa)

NCBI Accession: [NP_078912](#)

UniProt: [Q687X5](#)

Pathways: [Transition Metal Ion Homeostasis](#)

Application Details

Application Notes: Optimal working dilution should be determined by the investigator.

Comment: Denatured

Restrictions: For Research Use only

Handling

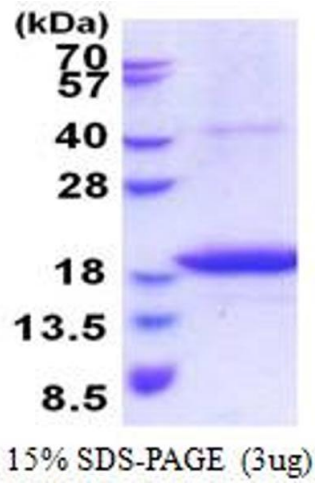
Format: Liquid

Concentration: 1 mg/mL

Buffer: Liquid. In 20 mM Tris-HCl buffer (pH 8.0) containing 0.4M uREA, 10 % glycerol

Storage: 4 °C,-20 °C,-80 °C

Storage Comment: Can be stored at +4C short term (1-2 weeks). For long term storage, aliquot and store at -20C or -70C. Avoid repeated freezing and thawing cycles.



SDS-PAGE

Image 1.