

Datasheet for ABIN5853591  
**UQCRC1 Protein (AA 35-480) (His tag)**



[Go to Product page](#)

1 Image

## Overview

Quantity:	100 µg
Target:	UQCRC1
Protein Characteristics:	AA 35-480
Origin:	Human
Source:	Escherichia coli (E. coli)
Protein Type:	Recombinant
Purification tag / Conjugate:	This UQCRC1 protein is labelled with His tag.
Application:	SDS-PAGE (SDS)

## Product Details

Sequence:	MGSSHHHHHH SSSLVPRGSH MGSEFTATFA QALQFVPETQ VSLLDNGLRV ASEQSSQPTC TVGVWIDVGS RFETEKNGA GYFLEHLAFK GTKNRPGSAL EKEVESMGAAH LNAYSTREHT AYYIKALSKD LPKAVELLGD IVQNCSEDS QIEKERVIL REMQENDASM RDVVFNYLHA TAFQGTPLAQ AVEGPESENR KLSRADLTEY LSTHYKAPRM VLAAAGGVEH QLLDLAQKH LGGIPWTYAE DAVPTLTPCR FTGSEIRHRD DALPFAHVAI AVEGPGWASP DNVALQVANA IIGHYDCTYG GGVHLSSPLA SGAVANKLCQ SFQTFSCICYA ETGLLGAHFV CDRMKIDMM FVLQGQWMRL CTSATESEVA RGKNILRNAL VSHLDGTPPV CEDIGRSLT YGRRIPLAEW ESRIAEDAS VVREICKYI YDQCPAVAGY GPIEQLPDYN RIRSGMFWLR F
Purity:	> 85 % by SDS - PAGE

## Target Details

Target:	UQCRC1
---------	--------

## Target Details

---

Alternative Name:	<a href="#">uQCRC1 (UQCRC1 Products)</a>
Background:	UQCRC1 is a component of the ubiquinol-cytochrome c reductase complex (complex III or cytochrome b-c1 complex), which is part of the mitochondrial respiratory chain. This protein may mediate formation of the complex between cytochromes c and c1. Recombinant human uQCRC1 protein, fused to His-tag at N-terminus, was expressed in E.coli.
Molecular Weight:	51.8kDa (471aa)
NCBI Accession:	<a href="#">NP_003356</a>
UniProt:	<a href="#">P31930</a>

## Application Details

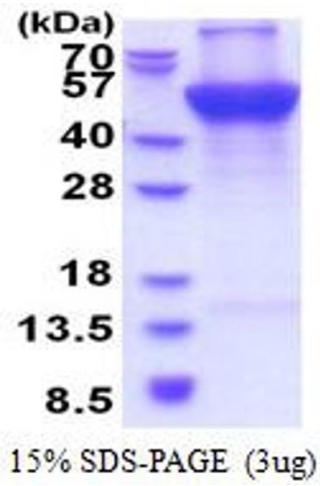
---

Application Notes:	Optimal working dilution should be determined by the investigator.
Comment:	Denatured
Restrictions:	For Research Use only

## Handling

---

Format:	Liquid
Concentration:	1 mg/mL
Buffer:	Liquid. In 20 mM Tris-HCl buffer ( pH 8.0) containing 0.4M uREA, 10 % glycerol
Storage:	4 °C,-20 °C,-80 °C
Storage Comment:	Can be stored at +4C short term (1-2 weeks). For long term storage, aliquot and store at -20C or -70C. Avoid repeated freezing and thawing cycles.



**SDS-PAGE**

Image 1.