

Datasheet for ABIN5853649
PROCR Protein (AA 18-210) (His tag)



[Go to Product page](#)

1 Image

Overview

Quantity:	100 µg
Target:	PROCR
Protein Characteristics:	AA 18-210
Origin:	Human
Source:	Escherichia coli (E. coli)
Protein Type:	Recombinant
Purification tag / Conjugate:	This PROCR protein is labelled with His tag.
Application:	SDS-PAGE (SDS)

Product Details

Sequence: MGSSHHHHHH SSSLVPRGSH MGSSQDASDG LQRLHMLQIS YFRDPYHVWY QGNASLGGHL
THVLEGPDTN TTIIQLQLQ EPESWARTQS GLQSYLLQFH GLVRLVHQR TLAFLPTIRC
FLGCELPPEG SRAHVFFEVA VNGSSFVSFR PERALWQADT QVTSGVVTFT LQQLNAYNRT
RYELREFLED TCVQYVQKHI SAENTKGSQT SRSYTS

Purity: > 80 % by SDS - PAGE

Target Details

Target:	PROCR
Alternative Name:	PROCR (PROCR Products)
Background:	PROCR is a receptor for activated protein C, a serine protease activated by and involved in the blood coagulation pathway. This protein is an N-glycosylated type I membrane protein that

Target Details

enhances the activation of protein C. Mutations in this gene have been associated with venous thromboembolism and myocardial infarction, as well as with late fetal loss during pregnancy. The encoded protein may also play a role in malarial infection and has been associated with cancer. Recombinant human PROCR protein, fused to His-tag at N-terminus, was expressed in E.coli.

Molecular Weight: 24.4 kDa(216aa)

NCBI Accession: [NP_006395](#)

UniProt: [Q9UNN8](#)

Application Details

Application Notes: Optimal working dilution should be determined by the investigator.

Comment: Denatured

Restrictions: For Research Use only

Handling

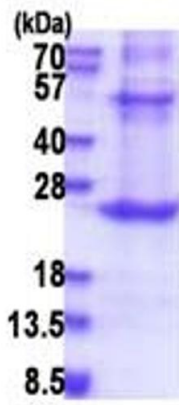
Format: Liquid

Concentration: 1 mg/mL

Buffer: Liquid. 20 mM Tris-HCl buffer (pH 8.0) containing 10 % glycerol 0.4M urea

Storage: 4 °C,-20 °C,-80 °C

Storage Comment: Can be stored at +4C short term (1-2 weeks). For long term storage, aliquot and store at -20C or -70C. Avoid repeated freezing and thawing cycles.



15% SDS-PAGE (3ug)

SDS-PAGE

Image 1.