

Datasheet for ABIN5853665
MED27 Protein (AA 1-311) (His tag)



[Go to Product page](#)

1 Image

Overview

Quantity:	50 µg
Target:	MED27
Protein Characteristics:	AA 1-311
Origin:	Human
Source:	Escherichia coli (E. coli)
Protein Type:	Recombinant
Purification tag / Conjugate:	This MED27 protein is labelled with His tag.
Application:	SDS-PAGE (SDS)

Product Details

Sequence: MGSSHHHHHH SSSLVPRGSH MGSMADVINV SVNLEAFSQA ISAIQALRSS VSRVFDCLKD
GMRNKETLEG REKAFIAHFQ DNLHSVNRDL NELERLSNLV GKPSENHPLH NSGLLSLDPV
QDKTPLYSQL LQAYKWSNKL QYHAGLASGL LNQQSLKRSA NQMGVSAKRR PKAQPTTLVL
PPQYVDDVIS RIDRMFPEMS IHLSRPNQTS AMLLVTLGKV LKIVVMRSL FIDRTIVKGY
NENVYTEDGK LDIWSKSNYQ VFQKVTDHAT TALLHYQLPQ MPDVVRSFM TWLRSYIKLF
QAPCQRCGKF LQDGLPPTWR DFRTLEAFHD TCRQ

Purity: > 80 % by SDS - PAGE

Target Details

Target: MED27

Alternative Name: MED27 ([MED27 Products](#))

Target Details

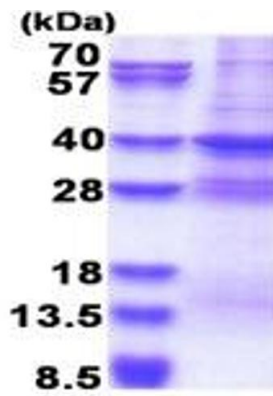
Background:	MED27 is a subunit of the CRSP (cofactor required for SP1 activation) complex, which, along with TFIID, is required for efficient activation by SP1. This protein is also a component of other multisubunit complexes e.g. thyroid hormone receptor-(TR-) associated proteins which interact with TR and facilitate TR function on DNA templates in conjunction with initiation factors and cofactors. Recombinant human MED27 protein, fused to His-tag at N-terminus, was expressed in E.coli.
Molecular Weight:	37.8 kDa (334aa)
NCBI Accession:	NP_004260
UniProt:	Q6P2C8
Pathways:	Stem Cell Maintenance , Regulation of Lipid Metabolism by PPARAlpha

Application Details

Application Notes:	Optimal working dilution should be determined by the investigator.
Comment:	Denatured
Restrictions:	For Research Use only

Handling

Format:	Liquid
Concentration:	0.5 mg/mL
Buffer:	Liquid. In 20 mM Tris-HCl buffer (pH 8.0) containing 0.4M urea, 10 % glycerol
Storage:	4 °C,-20 °C,-80 °C
Storage Comment:	Can be stored at +4C short term (1-2 weeks). For long term storage, aliquot and store at -20C or -70C. Avoid repeated freezing and thawing cycles.



15% SDS-PAGE (3ug)

SDS-PAGE

Image 1.