

Datasheet for ABIN5853707

HLA-DOB Protein (AA 27-224) (His tag)[Go to Product page](#)**1** Image

Overview

Quantity:	100 µg
Target:	HLA-DOB
Protein Characteristics:	AA 27-224
Origin:	Human
Source:	Escherichia coli (E. coli)
Protein Type:	Recombinant
Purification tag / Conjugate:	This HLA-DOB protein is labelled with His tag.
Application:	SDS-PAGE (SDS)

Product Details

Sequence:	MGSSHHHHHH SSSLVPRGSH MSGTDSPEF FVIQAKADCY FTNGTEKVQF VRFIFNLEE YVRFSDVGM FVALTKLGQP DAEQWNSRLD LLERSRQAVD GVCRHNYRLG APFTVGRKVVQ PEVTVPERT PLLHQHLLH CSVTGFYPGD IKIKWFLNGQ EERAGVMSTG PIRNGDWTFQ TVVMLEMTPE LGHVYTCLVD HSSLLSPVSV EWRAQSEYSW RK
Purity:	> 95 % by SDS - PAGE

Target Details

Target:	HLA-DOB
Alternative Name:	HLA-DOB (HLA-DOB Products)
Background:	HLA-DOB belongs to the HLA class II beta chain paralogues. This class II molecule is a heterodimer consisting of an alpha (DOA) and a beta chain (DOB), both anchored in the

Target Details

membrane. It is located in intracellular vesicles. DO suppresses peptide loading of MHC class II molecules by inhibiting HLA-DM. Class II molecules are expressed in antigen presenting cells (APC: B lymphocytes, dendritic cells, macrophages). The beta chain is approximately 26-28 kDa and its gene contains 6 exons. Exon one encodes the leader peptide, exons 2 and 3 encode the two extracellular domains, exon 4 encodes the transmembrane domain and exon 5 encodes the cytoplasmic tail. Recombinant human HLA-DOB protein, fused to His-tag at N-terminus, was expressed in E.coli.

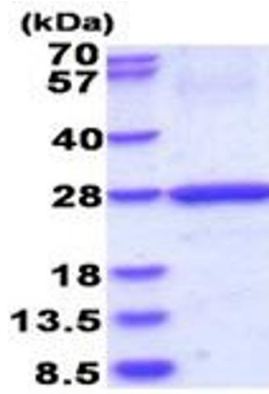
Molecular Weight:	25.2 kDa (222aa)
NCBI Accession:	NP_002111
UniProt:	P13765
Pathways:	Cancer Immune Checkpoints , Human Leukocyte Antigen (HLA) in Adaptive Immune Response

Application Details

Application Notes:	Optimal working dilution should be determined by the investigator.
Comment:	Denatured
Restrictions:	For Research Use only

Handling

Format:	Liquid
Concentration:	1 mg/mL
Buffer:	Liquid. In 20 mM Tris-HCl buffer (pH 8.0) containing 0.4M urea, 10 % glycerol
Storage:	4 °C,-20 °C,-80 °C
Storage Comment:	Can be stored at +4C short term (1-2 weeks). For long term storage, aliquot and store at -20C or -70C. Avoid repeated freezing and thawing cycles.



15% SDS-PAGE (3ug)

SDS-PAGE

Image 1.