



[Go to Product page](#)

Datasheet for ABIN5853712

YIF1B Protein (AA 1-156) (His tag)

1 Image

Overview

Quantity:	100 µg
Target:	YIF1B
Protein Characteristics:	AA 1-156
Origin:	Human
Source:	Escherichia coli (E. coli)
Protein Type:	Recombinant
Purification tag / Conjugate:	This YIF1B protein is labelled with His tag.
Application:	SDS-PAGE (SDS)

Product Details

Sequence:	MGSSHHHHHH SSSLVPRGSH MGSMHPAGLA AAAAGTPRLR KWPSKRRIPIV SQPGMADPHQ LFDDTSSAQS RGYGAQRAPG GLSYPAASPT PHAAFLADPV SNMAMAYGSS LAAQGKELVD KNIDRFIPIT KLKYYFAVDT MYVGRKLGLL FFPYLHQDWE VQYQQDTPVA PRFDVNAPD
Purity:	> 90 % by SDS - PAGE

Target Details

Target:	YIF1B
Alternative Name:	YIF1B (YIF1B Products)
Background:	YIF1b belongs to the YIF1 family. Recombinant human YIF1B protein, fused to His-tag at N-terminus, was expressed in E.coli.
Molecular Weight:	19.5 kDa (179aa)

Target Details

NCBI Accession: [NP_001034761](#)

UniProt: [Q5BJH7](#)

Application Details

Application Notes: Optimal working dilution should be determined by the investigator.

Comment: Denatured

Restrictions: For Research Use only

Handling

Format: Liquid

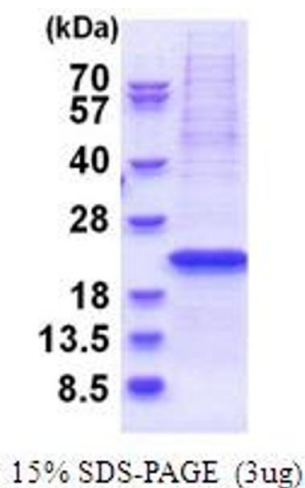
Concentration: 1 mg/mL

Buffer: Liquid. In 20 mM Tris-HCl buffer (pH 8.0) containing 10 % glycerol 0.4M urea

Storage: 4 °C,-20 °C,-80 °C

Storage Comment: Can be stored at +4C short term (1-2 weeks). For long term storage, aliquot and store at -20C or -70C. Avoid repeated freezing and thawing cycles.

Images



SDS-PAGE

Image 1.