

Datasheet for ABIN5853757  
**MLLT11 Protein (AA 1-90) (His tag)**



[Go to Product page](#)

1 Image

## Overview

Quantity:	100 µg
Target:	MLLT11
Protein Characteristics:	AA 1-90
Origin:	Human
Source:	Escherichia coli (E. coli)
Protein Type:	Recombinant
Purification tag / Conjugate:	This MLLT11 protein is labelled with His tag.
Application:	SDS-PAGE (SDS)

## Product Details

Sequence:	MGSSHHHHHH SSSLVPRGSH MGSMRDPVSS QYSSFLFWRM PIPELDLSEL EGLGLSDTAT YKVKDSSVGK MIGQATAADQ EKNPEGDGLL EYSTFNFWRA PIASHSFEL DLL
Purity:	> 80 % by SDS - PAGE

## Target Details

Target:	MLLT11
Alternative Name:	MLLT11 ( <a href="#">MLLT11 Products</a> )
Background:	Protein AF1q, also known as MLLT11, belongs to the Mixed-Lineage Leukemia (MLL) protein family. It is located on chromosome 11q23. MLLT11 plays a role in leukemogenesis and, specifically, the progression of acute monocytic leukemia (AML). Also, expressed in embryonic brain cortex, MLLT11 is upregulated during neuronal differentiation and is thought to play a role

## Target Details

in the development of the central nervous system. Recombinant human MLLT11 protein, fused to His-tag at N-terminus, was expressed in E.coli.

Molecular Weight: 12.4 kDa (113aa)

NCBI Accession: [NP\\_006809](#)

UniProt: [Q13015](#)

## Application Details

Application Notes: Optimal working dilution should be determined by the investigator.

Comment: Denatured

Restrictions: For Research Use only

## Handling

Format: Liquid

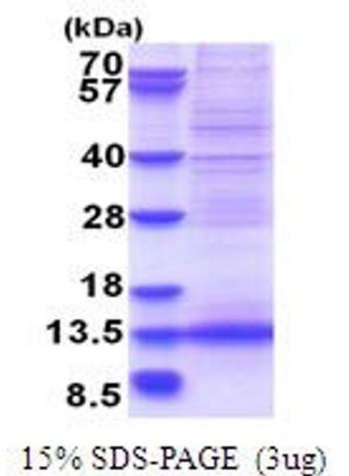
Concentration: 0.25 mg/mL

Buffer: Liquid. In 20 mM Tris-HCl buffer ( pH 8.0) containing 0.4M urea, 10 % glycerol

Storage: 4 °C,-20 °C,-80 °C

Storage Comment: Can be stored at +4C short term (1-2 weeks). For long term storage, aliquot and store at -20C or -70C. Avoid repeated freezing and thawing cycles.

## Images



### SDS-PAGE

Image 1.