



[Go to Product page](#)

Datasheet for ABIN5853766

ASPHD1 Protein (AA 96-390) (His tag)

1 Image

Overview

Quantity:	100 µg
Target:	ASPHD1
Protein Characteristics:	AA 96-390
Origin:	Human
Source:	Escherichia coli (E. coli)
Protein Type:	Recombinant
Purification tag / Conjugate:	This ASPHD1 protein is labelled with His tag.
Application:	SDS-PAGE (SDS)

Product Details

Sequence: MGSSHHHHHH SSSLVPRGSH MGSYRLGSQD MQALGAGSRA GGVRGGPVGC SEAGGPSPGG
 PGDPGEGPRT EGLVSRRLRA YARRYSWAGM GRVRRAAQGG PGPGRGPGVL GIQRPGLLFL
 PDLPSAPFVP RDAQRHVEL LESSFPAIRL DFGAVSWDFS GTTPPPRGWS PPLAPGCYQL
 LLYQAGRCQP SNCRRCPGAY RALRGLRSFM SANTFGNAGF SVLLPGARLE GRCGPTNARV
 RCHLGLKIPP GCELVVGGEQ QCWAEGHCLL VDDSFLHTVA HNGSPEDGPR VVFIVDLWHP
 NVAGAERQAL DFVFAPDP

Purity: > 90 % by SDS - PAGE

Target Details

Target:	ASPHD1
Alternative Name:	ASPHD1 (ASPHD1 Products)

Target Details

Background: ASPHD1 belongs to the aspartyl/asparaginyl beta-hydroxylase family. Recombinant human ASPHD1 protein, fused to His-tag at N-terminus, was expressed in E.coli.

Molecular Weight: 33.6 kDa (318aa)

NCBI Accession: [NP_859069](#)

UniProt: [Q5U4P2](#)

Application Details

Application Notes: Optimal working dilution should be determined by the investigator.

Comment: Denatured

Restrictions: For Research Use only

Handling

Format: Liquid

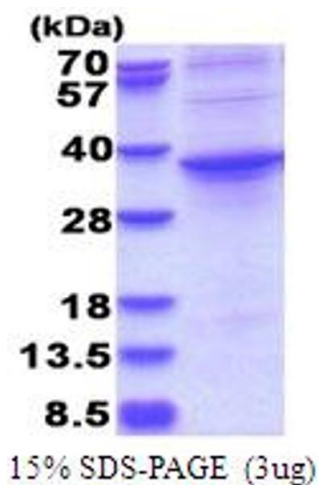
Concentration: 0.5 mg/mL

Buffer: Liquid. In 20 mM Tris-HCl buffer (pH 8.0) containing 0.4M urea, 10 % glycerol

Storage: 4 °C,-20 °C,-80 °C

Storage Comment: Can be stored at +4C short term (1-2 weeks). For long term storage, aliquot and store at -20C or -70C. Avoid repeated freezing and thawing cycles.

Images



SDS-PAGE

Image 1.