



[Go to Product page](#)

Datasheet for ABIN5853767

ABHD12B Protein (AA 1-255) (His tag)

1 Image

Overview

Quantity:	100 µg
Target:	ABHD12B
Protein Characteristics:	AA 1-255
Origin:	Human
Source:	Escherichia coli (E. coli)
Protein Type:	Recombinant
Purification tag / Conjugate:	This ABHD12B protein is labelled with His tag.
Application:	SDS-PAGE (SDS)

Product Details

Sequence:	MGSSHHHHHH SSSLVPRGSH MGSMLGIWHT VPSCRGEDAK GKDCCWYEAA LRDGNPIIVY LHGSAEHRAA SHRLKLVKVL SDGGFHVLSV DYRGFGDSTG KPTEEGLTTD AICVYEWTKA RSGITPVCLW GHSLGTGVAT NAAKVLEEKG CPVDAIVLEA PFTNMWVASI NYPLLLKIYRN IPGFLRTLMD ALRKDKIIFP NDENVKFLSS PLLILHGEDD RTVPLEYGKK LYEIARNAYR NKERVKMVIF PPGFQHNLCC KSPTLLITVR DFLSKQWS
Purity:	> 90 % by SDS - PAGE

Target Details

Target:	ABHD12B
Alternative Name:	ABHD12B (ABHD12B Products)
Background:	ABHD12B belongs to the serine esterase family. Recombinant human ABHD12B protein, fused

Target Details

to His-tag at N-terminus, was expressed in E.coli.

Molecular Weight: 31.0 kDa (278aa)

Application Details

Application Notes: Optimal working dilution should be determined by the investigator.

Comment: Denatured

Restrictions: For Research Use only

Handling

Format: Liquid

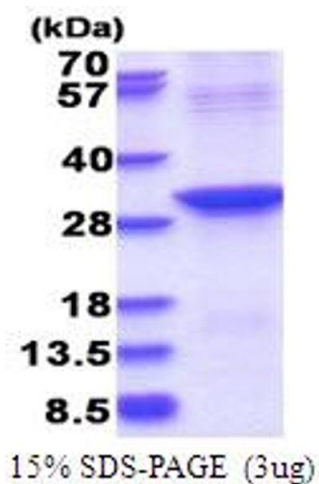
Concentration: 1 mg/mL

Buffer: Liquid. In 20 mM Tris-HCl buffer (pH 8.0) containing 0.4M urea, 10 % glycerol

Storage: 4 °C,-20 °C,-80 °C

Storage Comment: Can be stored at +4C short term (1-2 weeks). For long term storage, aliquot and store at -20C or -70C. Avoid repeated freezing and thawing cycles.

Images



SDS-PAGE

Image 1.