

Datasheet for ABIN5853811

**ANTXR2 Protein (AA 34-317) (His tag)**[Go to Product page](#)**1** Image

## Overview

Quantity:	50 µg
Target:	ANTXR2
Protein Characteristics:	AA 34-317
Origin:	Human
Source:	Escherichia coli (E. coli)
Protein Type:	Recombinant
Purification tag / Conjugate:	This ANTXR2 protein is labelled with His tag.
Application:	SDS-PAGE (SDS)

## Product Details

Sequence: MGSSHHHHHH SSSLVPRGSH MGSQEQPSCR RAFDLVFLD KSGSVANNWI EIYNFVQQLA  
ERFVSPEMRL SFIVFSSQAT IILPLTGDRG KISKGLEDLK RVSPVGETYI HEGCLKLANEQ  
IQKAGGLKTS SIIIALTDGK LDGLVPSYAE KEAKISRSLG ASVYCVGVLD FEQAQLERIA  
DSKEQVFPVK GGFQALKGII NSILAQSCTE ILELQPSSVC VGEEFQIVLS GRGFMLGSRN  
GSVLCTYTVN ETYTTSVKPV SVQLNSMLCP APILNKAGET LDVSVSFNGG KSVISGSLIV  
TATECSN

Purity: > 90 % by SDS - PAGE

## Target Details

Target:	ANTXR2
Alternative Name:	ANTXR2 ( <a href="#">ANTXR2 Products</a> )

## Target Details

---

**Background:** ANTXR2 is called anthrax toxin receptor 2 because it allows the toxin that causes anthrax to attach to cells and trigger disease. This protein is involved in the formation of tiny blood vessels (capillaries). It is also important for maintaining the structure of basement membranes, which are thin, sheet-like structures that separate and support cells in many tissues. Recombinant human ANTXR2 protein, fused to His-tag at N-terminus, was expressed in E.coli and purified by using conventional chromatography techniques.

**Molecular Weight:** 33.0 kDa(307aa) confirmed by MALDI-TOF

**NCBI Accession:** [NP\\_001139266](#)

**UniProt:** [P58335](#)

## Application Details

---

**Application Notes:** Optimal working dilution should be determined by the investigator.

**Restrictions:** For Research Use only

## Handling

---

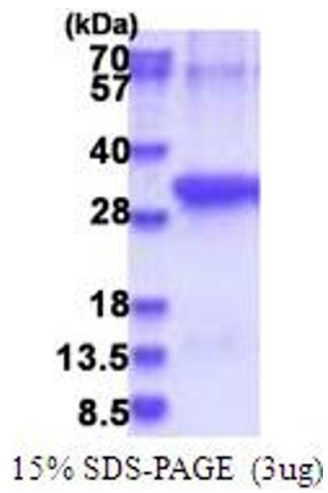
**Format:** Liquid

**Concentration:** 0.25 mg/mL

**Buffer:** Liquid. 20 mM Tris-HCl buffer ( pH 8.0) containing 10 % glycerol 1 mM DTT, 0.1M NaCl

**Storage:** 4 °C,-20 °C,-80 °C

**Storage Comment:** Can be stored at +4C short term (1-2 weeks). For long term storage, aliquot and store at -20C or -70C. Avoid repeated freezing and thawing cycles.



**SDS-PAGE**

Image 1.