

Datasheet for ABIN5853826  
**Kallikrein 11 Protein (KLK11) (AA 54-278)**



[Go to Product page](#)

1 Image

Overview

Quantity:	100 µg
Target:	Kallikrein 11 (KLK11)
Protein Characteristics:	AA 54-278
Origin:	Human
Source:	Escherichia coli (E. coli)
Protein Type:	Recombinant
Application:	SDS-PAGE (SDS)

Product Details

Sequence: MIIKGFECKP HSQPWQAALF EKTRLLCGAT LIAPRWLLTA AHCLKPRYIV HLGQHNLQKE  
EGCEQTRTAT ESFPHPGFNN SLPNKDHRND IMLVKMASPV SITWAVRPLT LSSRCVTAGT  
SCLISGWGST SSPQLRLPHT LRCANITIE HQKCENAYPG NITDTMVCAS VQEGGKDCSQ  
GDSGGPLVCN QSLQGIISWG QDPCAITRKP GVYTKVCKYV DWIQET

Purity: > 85 % by SDS - PAGE

Target Details

Target: Kallikrein 11 (KLK11)

Alternative Name: KLK11 ([KLK11 Products](#))

Background: Kallikreins are a subgroup of serine proteases having diverse physiological functions. Growing evidence suggests that many kallikreins are implicated in carcinogenesis and some have potential as novel cancer and other disease biomarkers. This gene is one of the fifteen kallikrein

## Target Details

---

subfamily members located in a cluster on chromosome 19. Alternate splicing of this gene results in multiple transcript variants encoding distinct isoforms which are differentially expressed. Recombinant human KLK11 protein was expressed in E.coli.

Molecular Weight: 24.8 kDa ( 226aa)

NCBI Accession: [NP\\_659196](#)

UniProt: [Q9UBX7](#)

Pathways: [Complement System](#)

## Application Details

---

Application Notes: Optimal working dilution should be determined by the investigator.

Comment: Denatured

Restrictions: For Research Use only

## Handling

---

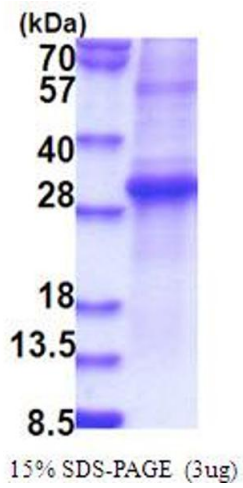
Format: Liquid

Concentration: 1.0 mg/mL

Buffer: Liquid. In 20 mM Tris-HCl buffer ( pH 8.0) containing 10 % glycerol, 0.4M urea

Storage: 4 °C,-20 °C,-80 °C

Storage Comment: Can be stored at +4C short term (1-2 weeks). For long term storage, aliquot and store at -20C or -70C. Avoid repeated freezing and thawing cycles.



### SDS-PAGE

Image 1.