

Datasheet for ABIN5853890
RAB39B Protein (AA 1-213) (His tag)



[Go to Product page](#)

1 Image

Overview

Quantity:	100 µg
Target:	RAB39B
Protein Characteristics:	AA 1-213
Origin:	Human
Source:	Escherichia coli (E. coli)
Protein Type:	Recombinant
Purification tag / Conjugate:	This RAB39B protein is labelled with His tag.
Application:	SDS-PAGE (SDS)

Product Details

Sequence: MGSSHHHHHH SSSLVPRGSH MGSMEAIWLY QFRLIVIGDS TVGKSLIRR FTEGRFAQVS
DPTVGVDFFS RLVEIEPGKR IKLQIWDTAG QERFRSITRA YRNSVGGLL LFDITNRRSF
QNVHEWLEET KVHVQPYQIV FVLVGHKCDL DTQRQVTRHE AEKLAAAYGM KYIETSARDA
INVEKAFTDL TRDIYELVKR GEITIQEGWE GVKSGFVPNV VHSSEEVVKS ERRCLC

Purity: > 90 % by SDS - PAGE

Target Details

Target:	RAB39B
Alternative Name:	RAB39B (RAB39B Products)
Background:	RAB39B is a member of the Rab family of proteins. Rab proteins are small GTPases that are involved in vesicular trafficking. Mutations in this gene are associated with X-linked mental

Target Details

retardation. Recombinant human RAB39B protein, fused to His-tag at N-terminus, was expressed in E.coli and purified by using conventional chromatography techniques.

Molecular Weight: 27.0 kDa (236aa) confirmed by MALDI-TOF

NCBI Accession: [NP_741995](#)

UniProt: [Q96DA2](#)

Application Details

Application Notes: Optimal working dilution should be determined by the investigator.

Restrictions: For Research Use only

Handling

Format: Liquid

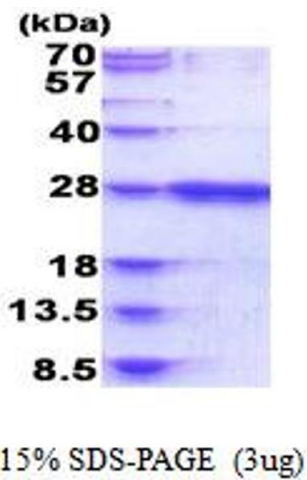
Concentration: 0.25 mg/mL

Buffer: Liquid. In Phosphate buffered saline (pH 7.4), 30 % glycerol, 1 mM DTT

Storage: 4 °C,-20 °C,-80 °C

Storage Comment: Can be stored at +4C short term (1-2 weeks). For long term storage, aliquot and store at -20C or -70C. Avoid repeated freezing and thawing cycles.

Images



SDS-PAGE

Image 1.