

Datasheet for ABIN5853943
CD300E Protein (AA 18-173) (His tag)



[Go to Product page](#)

1 Image

Overview

Quantity:	100 µg
Target:	CD300E
Protein Characteristics:	AA 18-173
Origin:	Human
Source:	Escherichia coli (E. coli)
Protein Type:	Recombinant
Purification tag / Conjugate:	This CD300E protein is labelled with His tag.
Application:	SDS-PAGE (SDS)

Product Details

Sequence:	MGSSHHHHHH SSSLVPRGSH MGSLKGP GSV TGTAGDSLTV WCQYESMYKG YNKYWCRGQY DTSCESIVET KGEEKVERNG RVSIRDHPEA LAFTVTMQNL NEDDAGSYWC KIQTVVWLDS WSRDPSDLVR VYVSPAITTP RRTTHPATPP IFLVNPGRN LSTGEVLTQN SGFRLSSPH
Purity:	> 90 % by SDS - PAGE

Target Details

Target:	CD300E
Alternative Name:	CD300E (CD300E Products)
Background:	CMRF35-like molecule 2 precursor, also known as CD300E, is a 205 amino acid single-pass type I membrane protein that contains one Ig-like V-type (immunoglobulin-like) domain and belongs to the CD300 family. Interacting with DAP12, CD300E most likely functions as an

Target Details

activating receptor. CD300E is present on the surface of mature hematopoietic cells of the monocyte and myeloid lineages. Recombinant human CD300E protein, fused to His-tag at N-terminus, was expressed in E.coli.

Molecular Weight: 19.9kDa (179aa)

NCBI Accession: [NP_852114](#)

UniProt: [Q496F6](#)

Application Details

Application Notes: Optimal working dilution should be determined by the investigator.

Comment: Denatured

Restrictions: For Research Use only

Handling

Format: Liquid

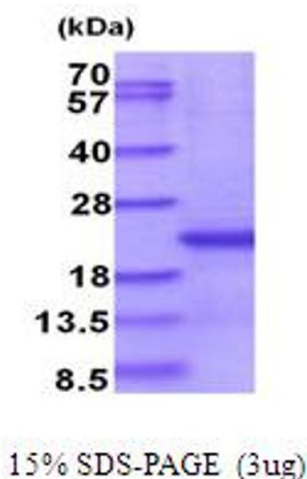
Concentration: 1 mg/mL

Buffer: Liquid. In 20 mM Tris-HCl buffer (pH 8.0)

Storage: 4 °C,-20 °C,-80 °C

Storage Comment: Can be stored at +4C short term (1-2 weeks). For long term storage, aliquot and store at -20C or -70C. Avoid repeated freezing and thawing cycles.

Images



SDS-PAGE

Image 1.