

Datasheet for ABIN5853954
RASL12 Protein (AA 1-266) (His tag)



[Go to Product page](#)

1 Image

Overview

Quantity:	100 µg
Target:	RASL12
Protein Characteristics:	AA 1-266
Origin:	Human
Source:	Escherichia coli (E. coli)
Protein Type:	Recombinant
Purification tag / Conjugate:	This RASL12 protein is labelled with His tag.
Application:	SDS-PAGE (SDS)

Product Details

Sequence:	MGSSHHHHHH SSSLVPRGSH MGSMSSVFGK PRAGSGPQSA PLEVNLAIG RRGAGKSALT VKFLTKRFIS EYDPNLEDY SSEETVDHQP VHLRVMdTAD LDTPRNCERY LNWAHAFLVV YSVDSRQSF D SSSYLELLA LHAKETQRSI PALLLGNKLD MAQYRQVTKA EGVALAGRFG CLFFEVSACL DFEHVQHVFH EAVREARREL EKSPLTRPLF ISEERALPHQ APLTARHG LA SCTFNTLSTI NLKEMPTVAQ AKLVTVKSSR AQSKRKAPTL TLLKGFKIF
Purity:	> 85 % by SDS - PAGE

Target Details

Target:	RASL12
Alternative Name:	RASL12 (RASL12 Products)
Background:	RASL12 belongs to the small GTPase superfamily, Ras family. Recombinant human RASL12

Target Details

protein, fused to His-tag at N-terminus, was expressed in E.coli.

Molecular Weight: 32.1 kDa (289aa)

NCBI Accession: [NP_057647](#)

UniProt: [Q9NYN1](#)

Application Details

Application Notes: Optimal working dilution should be determined by the investigator.

Comment: Denatured

Restrictions: For Research Use only

Handling

Format: Liquid

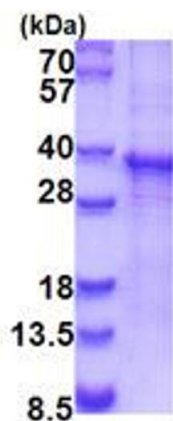
Concentration: 0.5 mg/mL

Buffer: Liquid, In 20 mM Tris-HCl (pH 8.0) containing 10 % glycerol

Storage: 4 °C,-20 °C,-80 °C

Storage Comment: Can be stored at +4C short term (1-2 weeks). For long term storage, aliquot and store at -20C or -70C. Avoid repeated freezing and thawing cycles.

Images



15% SDS-PAGE (3ug)

SDS-PAGE

Image 1.