

Datasheet for ABIN5853985

**GDF5 Protein (AA 376-495) (His tag)**[Go to Product page](#)**1** Image

## Overview

Quantity:	100 µg
Target:	GDF5
Protein Characteristics:	AA 376-495
Origin:	Human
Source:	Escherichia coli (E. coli)
Protein Type:	Recombinant
Purification tag / Conjugate:	This GDF5 protein is labelled with His tag.
Application:	SDS-PAGE (SDS)

## Product Details

Sequence:	MGSSHHHHHH SSSLVPRGSH MGSAPLANRQ GKRPSKNLKA RCSRKALHVN FKDMGWDDWI IAPLEYEAFH CEGLCFPLR SHLEPTNHAV IQTLMNSMDP ESTPPTCCVP TRLSPISILF IDSANNVYK QYEDMVVESC GCR
Purity:	> 90 % by SDS - PAGE

## Target Details

Target:	GDF5
Alternative Name:	GDF5 ( <a href="#">GDF5 Products</a> )
Background:	Growth/differentiation factor 5 precursor, also known as GDF5, is a member of the TGF superfamily. GDF5 has been shown to induce activation of plasminogen activator, thereby inducing angiogenesis. It is predominantly expressed in long bones during fetal embryonic

## Target Details

development and is involved in bone formation. GDF5 mutations have been identified in mice with the mutation brachypodism (bp), a mutation which affects the length and number of bones in limbs. Recombinant mouse GDF5 protein, fused to His-tag at N-terminus, was expressed in E.coli.

Molecular Weight: 16kDa (143aa)

NCBI Accession: [NP\\_032135](#)

UniProt: [P43027](#)

## Application Details

Application Notes: Optimal working dilution should be determined by the investigator.

Comment: Denatured

Restrictions: For Research Use only

## Handling

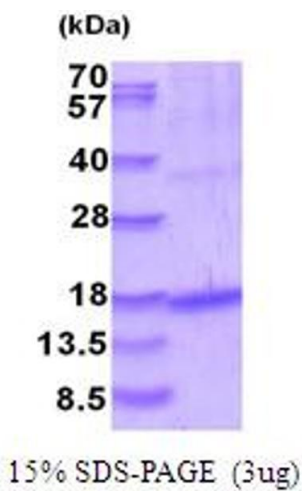
Format: Liquid

Concentration: 0.5 mg/mL

Buffer: Liquid. In 20 mM Tris-HCl buffer ( pH 8.0) containing 10 % glycerol

Storage: 4 °C,-20 °C,-80 °C

Storage Comment: Can be stored at +4C short term (1-2 weeks). For long term storage, aliquot and store at -20C or -70C. Avoid repeated freezing and thawing cycles.



SDS-PAGE

Image 1.