

Datasheet for ABIN5853989  
**LTBR Protein (AA 28-227) (His tag)**



[Go to Product page](#)

1 Image

## Overview

Quantity:	50 µg
Target:	LTBR
Protein Characteristics:	AA 28-227
Origin:	Human
Source:	Escherichia coli (E. coli)
Protein Type:	Recombinant
Purification tag / Conjugate:	This LTBR protein is labelled with His tag.
Application:	SDS-PAGE (SDS)

## Product Details

Sequence: MGSSHHHHHH SSSLVPRGSH MGSMSPQAV PPYASENQTC RDQEKEYYEP QHRICCSRCP  
PGTYVSAKCS RIRDTVCA TC AENSYNEHWN YLTICQLCRP CDPVMGLEEI APCTSKRKTQ  
CRCQPGMFCA AWALECTHCE LLSDCPPGTE AELKDEVGKG NNHCVPCKAG HFQNTSSPSA  
RCQPHTRCEN QGLVEAAPGT AQSDTTCKNP LEPLPPEMSG TMLM

Purity: > 90 % by SDS - PAGE

## Target Details

Target:	LTBR
Alternative Name:	LTBR ( <a href="#">LTBR Products</a> )
Background:	LTBR plays a role in signalling during the development of lymphoid and other organs, lipid metabolism, immune response, and programmed cell death. Activity of this receptor has also

## Target Details

---

been linked to carcinogenesis. Alternatively spliced transcript variants encoding multiple isoforms have been observed. Recombinant human LTBR protein, fused to His-tag at N-terminus, was expressed in E.coli and purified by using conventional chromatography techniques.

---

Molecular Weight: 24.6kDa (224aa) confirmed by MALDI-TOF

---

NCBI Accession: [NP\\_002333](#)

---

UniProt: [P36941](#)

---

Pathways: [NF-kappaB Signaling](#)

## Application Details

---

Application Notes: Optimal working dilution should be determined by the investigator.

---

Restrictions: For Research Use only

## Handling

---

Format: Liquid

---

Concentration: 0.5 mg/mL

---

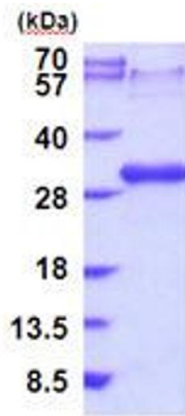
Buffer: Liquid. In PBS buffer ( pH 7.4) containing 10 % glycerol, 1 mM DTT

---

Storage: 4 °C,-20 °C,-80 °C

---

Storage Comment: Can be stored at +4C short term (1-2 weeks). For long term storage, aliquot and store at -20C or -70C. Avoid repeated freezing and thawing cycles.



15% SDS-PAGE (3ug)

**SDS-PAGE**

Image 1.