

Datasheet for ABIN5854443
DLK1 Protein (AA 24-303) (His tag)



[Go to Product page](#)

1 Image

Overview

Quantity:	50 µg
Target:	DLK1
Protein Characteristics:	AA 24-303
Origin:	Human
Source:	Baculovirus infected Insect Cells
Protein Type:	Recombinant
Purification tag / Conjugate:	This DLK1 protein is labelled with His tag.
Application:	SDS-PAGE (SDS)

Product Details

Sequence:	AECFPACNPQ NGFCEDDNCV RCQPGWQGGL CDQCVTSPGC LHGLCGEPGQ CICTDGWDGE LCDRDVRACS SAPCANNGTC VSLDDGLYEC SCAPGYSGKD CQKKDGPCVI NGSPCQHGGT CVDDEGRASH ASCLCPPGFS GNFCEIVANS CTPNPCENDG VCTDIGGDFR CRCPAGFIDK TCSRPTNCA SSPCQNGGTC LQHTQVSYEC LCKPEFTGLT CVKKRALSPQ QVTRLPSGYG LAYRLTPGVH ELPVQQPEHR ILKVSMKELN KKTPLLTEGQ LEHHHHHH
Purity:	> 95 % by SDS - PAGE
Endotoxin Level:	< 1.0 EU per 1 microgram of protein (determined by LAL method)

Target Details

Target:	DLK1
Alternative Name:	Protein delta homolog 1 (DLK1 Products)

Target Details

Background: DLK1, also known as protein delta homolog 1, belongs to the Notch/Delta/Serrate family of epidermal growth factor (EGF)-like repeat-containing proteins that act as ligands in the Notch signaling pathway. It has six well conserved epidermal-growth-factor motifs and contains up to ten O-glycosylation and N-glycosylation sites, six of which are differentially glycosylated. Recombinant human DLK1, fused to His-tag at C-terminus, was expressed in insect cell and purified by using conventional chromatography techniques.

Molecular Weight: 30.7kDa (288aa) 28-40kDa (SDS-PAGE under reducing conditions)

NCBI Accession: [NP_003827](#)

UniProt: [P80370](#)

Application Details

Application Notes: Optimal working dilution should be determined by the investigator.

Restrictions: For Research Use only

Handling

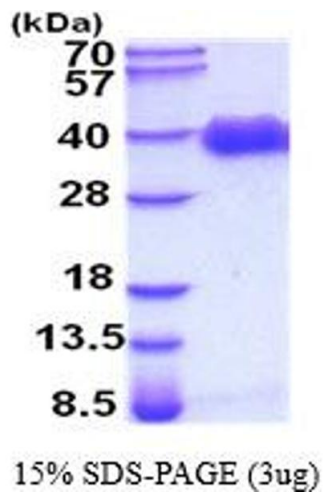
Format: Liquid

Concentration: 0.25 mg/mL

Buffer: Liquid. In Phosphate Buffered Saline (pH 7.4) containing 10 % glycerol.

Storage: 4 °C,-20 °C,-80 °C

Storage Comment: Can be stored at +4C short term (1-2 weeks). For long term storage, aliquot and store at -20C or -70C. Avoid repeated freezing and thawing cycles.



SDS-PAGE

Image 1.