

Datasheet for ABIN5854457  
**IL-6 Protein (AA 30-212)**



[Go to Product page](#)

1 Image

## Overview

Quantity:	5 µg
Target:	IL-6 (IL6)
Protein Characteristics:	AA 30-212
Origin:	Human
Source:	Escherichia coli (E. coli)
Protein Type:	Recombinant
Biological Activity:	Active
Application:	SDS-PAGE (SDS)

## Product Details

Sequence:	MVPPGEDSKD VAAPHRQPLT SSERIDKQIR YILDGISALR KETCNKSNMC ESSKEALAEN NLNLPKMAEK DGCFQSGFNE ETCLVKITG LLEFEVYLEY LQNRFESSEE QARAVQMSTK VLIQFLQKKA KNLDAITTPD PTTNASLLTK LQAQNQLQD MTHLILRSF KEFLQSSLRA LRQM
Purity:	> 95 % by SDS - PAGE
Endotoxin Level:	< 1.0 EU per 1 microgram of protein (determined by LAL method)
Biological Activity Comment:	Measured in a cell proliferation assay using TF-1 human erythroleukemic cell. The ED50 for this effect is less or equal to 1 ng/ml.

## Target Details

Target:	IL-6 (IL6)
Alternative Name:	Interleukin 6 ( <a href="#">IL6 Products</a> )

## Target Details

---

**Background:** IL6, also known as interleukin 6. It is a cytokine with a wide variety of biological functions. It is a potent inducer of the acute phase response. This protein plays an essential role in the final differentiation of B-cells into Ig-secreting cells Involved in lymphocyte and monocyte differentiation. It induces myeloma and plasmacytoma growth and induces nerve cells differentiation. Recombinant human IL6 protein was expressed in E.coli and purified by using conventional chromatography techniques.

**Molecular Weight:** 20.9kDa (184aa)

**NCBI Accession:** [NP\\_000591](#)

**UniProt:** [P05231](#)

**Pathways:** [TLR Signaling](#), [Hormone Transport](#), [Negative Regulation of Hormone Secretion](#), [Myometrial Relaxation and Contraction](#), [Positive Regulation of Immune Effector Process](#), [Production of Molecular Mediator of Immune Response](#), [Regulation of Carbohydrate Metabolic Process](#), [Autophagy](#), [Cell RedoxHomeostasis](#), [Cancer Immune Checkpoints](#), [Inflammasome](#)

## Application Details

---

**Application Notes:** Optimal working dilution should be determined by the investigator.

**Comment:** Bioactivity Validated

**Restrictions:** For Research Use only

## Handling

---

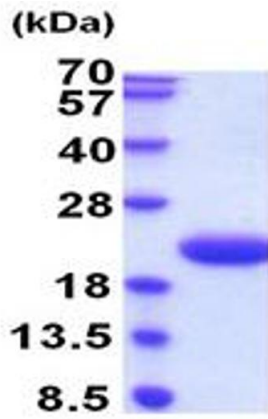
**Format:** Liquid

**Concentration:** 0.5 mg/mL

**Buffer:** Liquid. In phosphate buffered saline ( pH 7.4)

**Storage:** 4 °C,-20 °C,-80 °C

**Storage Comment:** Can be stored at +4C short term (1-2 weeks). For long term storage, aliquot and store at -20C or -70C. Avoid repeated freezing and thawing cycles.



15% SDS-PAGE (3ug)

**SDS-PAGE**

Image 1.