

Datasheet for ABIN5854459
SLAMF7 Protein (AA 23-226) (His tag)



[Go to Product page](#)

1 Image

Overview

Quantity:	50 µg
Target:	SLAMF7
Protein Characteristics:	AA 23-226
Origin:	Human
Source:	Baculovirus infected Insect Cells
Protein Type:	Recombinant
Purification tag / Conjugate:	This SLAMF7 protein is labelled with His tag.
Application:	SDS-PAGE (SDS)

Product Details

Sequence:	SGPVKELVGS VGGAVTFPLK SKVKQVDSIV WTFNTTPLVT IQPEGGTIIV TQNRNRERVD FPDGGYSLKL SKLKKNDSDGI YYVGIYSSSL QQPSTQEYVL HVYEHLSKPK VTMGLQSNKN GTCVTNLTCC MEHGEEDVIY TWKALGQAAN ESHNGSILPI SWRWGESDMT FICVARNPVS RNFSSPILAR KLCEGAADDP DSSMLEHHHH HH
Purity:	> 95 % by SDS - PAGE
Endotoxin Level:	< 1.0 EU per 1 microgram of protein (determined by LAL method)

Target Details

Target:	SLAMF7
Alternative Name:	SLAM family member 7 (SLAMF7 Products)
Background:	SLAMF7, also known as SLAM family member 7, is a single-pass type 1 membrane protein and

Target Details

a member of the CS2 family of cell surface receptors. Isoform 1 of this protein mediates NK cell activation through a SH2D1A-independent extracellular signal-regulated ERK-mediated pathway. It may play a role in lymphocyte adhesion. SLAMF7 can exert activating or inhibitory influences on cells of the immune system depending on cellular context and the availability of effector proteins. Recombinant human SLAMF7, fused to His-tag at C-terminus, was expressed in insect cell and purified by using conventional chromatography techniques.

Molecular Weight: 23.4kDa (212aa) 28-40kDa (SDS-PAGE under reducing conditions.)

NCBI Accession: [NP_067004](#)

UniProt: [Q9NQ25](#)

Application Details

Application Notes: Optimal working dilution should be determined by the investigator.

Restrictions: For Research Use only

Handling

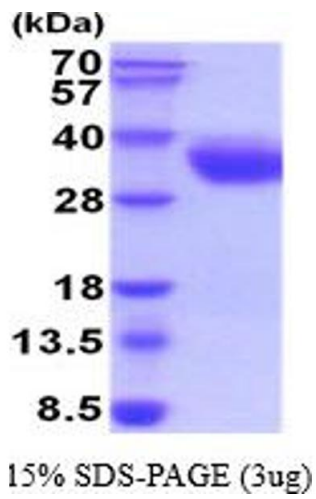
Format: Liquid

Concentration: 0.5 mg/mL

Buffer: Liquid. In Phosphate Buffered Saline (pH 7.4) containing 10 % glycerol.

Storage: 4 °C,-20 °C,-80 °C

Storage Comment: Can be stored at +4C short term (1-2 weeks). For long term storage, aliquot and store at -20C or -70C. Avoid repeated freezing and thawing cycles.



SDS-PAGE

Image 1.