

Datasheet for ABIN5854491

CRP Protein (AA 20-225) (His tag)



[Go to Product page](#)

1 Image

Overview

Quantity:	50 µg
Target:	CRP
Protein Characteristics:	AA 20-225
Origin:	Mouse
Source:	Baculovirus infected Insect Cells
Protein Type:	Recombinant
Purification tag / Conjugate:	This CRP protein is labelled with His tag.
Application:	SDS-PAGE (SDS)

Product Details

Sequence:	HEDMFKKAFV FPKESDTSYV SLEAESKKPL NTFTVCLHFY TALSTVRSFS VFSYATKKNS NDILIFWNKD KQYTFGVGGA EVRFMVSEIP EAPTHICASW ESATGIVEFW IDGKPKVRKS LHKG YTVGPD ASIILGQEQD SYGGDFDAKQ SLVGDIGDVN MWDFVLSPEQ ISTVYVGGTL SPNVLNWRAL NYKAQGDVFI KPQLWS
Purity:	> 95% by SDS-PAGE
Endotoxin Level:	< 1 EU per 1 µg of protein (determined by LAL method)

Target Details

Target:	CRP
Alternative Name:	C-Reactive Protein/CRP (CRP Products)
Background:	CRP, also known as c-reactive protein, is a member of the pentraxin family of proteins. It

Target Details

promotes agglutination, bacterial capsular swelling, phagocytosis and complement fixation through its calcium-dependent binding to phosphorylcholine. Recombinant mouse CRP, fused to His-tag at C-terminus, was expressed in insect cell and purified by using conventional chromatography techniques.

Molecular Weight: 24.1 kDa (214aa)

NCBI Accession: [NP_031794](#)

UniProt: [P14847](#)

Pathways: [Carbohydrate Homeostasis](#)

Application Details

Application Notes: Optimal working dilution should be determined by the investigator.

Restrictions: For Research Use only

Handling

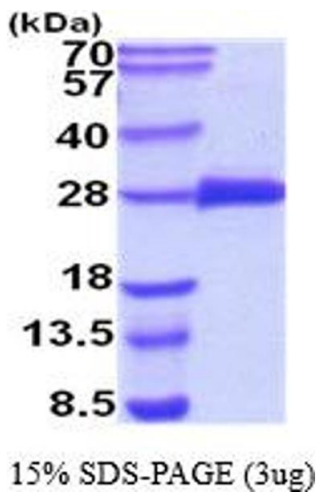
Format: Liquid

Concentration: 0.5 mg/mL

Buffer: Liquid. In 20 mM Tris-HCl buffer (pH 8.0) containing 1 mM DTT, 0.1M PMSF, 40 % glycerol.

Storage: 4 °C,-20 °C,-80 °C

Storage Comment: Can be stored at +2°C to +8°C for 1 week. For long term storage, aliquot and store at -20°C to -80°C. Avoid repeated freezing and thawing cycles.



SDS-PAGE
Image 1.