

Datasheet for ABIN5854493  
**CDHR5 Protein (AA 29-641) (His tag)**



[Go to Product page](#)

1 Image

## Overview

Quantity:	50 µg
Target:	CDHR5
Protein Characteristics:	AA 29-641
Origin:	Mouse
Source:	Baculovirus infected Insect Cells
Protein Type:	Recombinant
Purification tag / Conjugate:	This CDHR5 protein is labelled with His tag.
Application:	SDS-PAGE (SDS)

## Product Details

Sequence: QTQVCSVNQT IFRVEENTTV SEPLVNIFVP DGLHVTLGPL STPYAFRIEG KDLFLNVTPD  
YEENSLQAD VECKRGDAVV VRLEVFVAVL DINDNAPKFS FEIKTFNVSE DTKVNNTVIP  
ETQLKATDAD INDILVYTLQ EVTPNASKFF SLEGVNYPAL KLDQTLDYFK NQNMTFMLLA  
RDTWEENVEP SHTATATLVL NTLPADLRTP WFLPCSFTDG YVCIHAQYSA VVPTGHKLPS  
PLIMSPGPIY AVDGDQAINQ SIIYSIIAGN TDGTFIINAH DGNLTMTKSI PSPMKFTLLI  
RADQEDMAQY SVTQAIVEAR SVTGNPLQFS QSLYYGTVVL GSEAGTAVKD KTFPSEILRI  
QAQYPGFDDL NSAVTYRVTN SSEFMMNKDI MLTAVPMEEA RTIRVEVEAS NVTKDTATA  
VVEIQVSERE LPSTEFPTPP EAGGTTGPSS NTTMEAPLTS GTSQRPATTS SGGSVGPFPP  
GGTTLRPPTP ASSIPGGSPT LGTSTSPQTT TPGGDSAQTP KPGTSHPTAP TSRTSTSLMT  
TSSRSDSTQT PKPGTSQPMV PIPGASTSSQ PATPSGSSPQ TPKPGTSQST ATGPISGAGE  
QGDGQRFSTV DMALEHHHHH H

Purity: > 90 % by SDS - PAGE

## Product Details

---

Endotoxin Level: < 1.0 EU per 1 microgram of protein (determined by LAL method)

## Target Details

---

Target: CDHR5

Alternative Name: Cadherin-related family member 5 ([CDHR5 Products](#))

Background: CDHR5, also known as cadherin-related family member 5, is a calcium-dependent cell adhesion protein. It is expressed at lateral and basal surfaces of epithelia during kidney and lung development and is located in coated pits. Recombinant mouse CDHR5, fused to His-tag at C-terminus, was expressed in insect cell and purified by using conventional chromatography techniques.

Molecular Weight: 66.3kDa (621aa) 70-100kDa (SDS-PAGE under reducing conditions)

NCBI Accession: [NP\\_001107794](#)

UniProt: [Q8VHF2](#)

## Application Details

---

Application Notes: Optimal working dilution should be determined by the investigator.

Restrictions: For Research Use only

## Handling

---

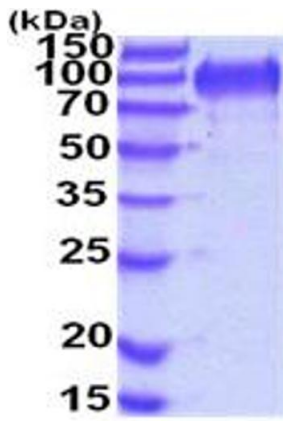
Format: Liquid

Concentration: 0.25 mg/mL

Buffer: In Phosphate Buffered Saline ( pH 7.4) containing 10 % glycerol.

Storage: 4 °C,-20 °C,-80 °C

Storage Comment: Can be stored at +4C short term (1-2 weeks). For long term storage, aliquot and store at -20C or -70C. Avoid repeated freezing and thawing cycles.



15% SDS-PAGE (3ug)

**SDS-PAGE**

Image 1.